



## PRESIDENT'S MESSAGE

BY TONY MICHAELIS, President



Our next **Board Meeting** will be **Friday, May 19th at 9:30am**. An agenda and **Zoom** invite will be sent to all homeowners by Monday, May 15th. We will also be sending a reminder email with the Agenda and Zoom link the morning of our Board meetings moving forward to encourage participation and provide easy access to our meetings.

On March 18th, we conducted our **Annual Homeowners Meeting**, held elections, and had another successful Block Party. At the Annual Meeting, we reviewed highlights from the past year, including a financial overview and Committee reports. Over 80 homeowners participated in our annual election which resulted in Gary Roman, Lesley (Sue) Johnson and myself being elected to two-year terms as members of your Board of Directors. Following the meeting, the new Board of Directors elected this year's Board Officers: Tony Michaelis

(President), Norm Giere (Vice President), Thomas Harp (Treasurer,) Lesley (Sue) Johnson (Secretary), and Gary Roman (Director-at- Large).

## BLOCK PARTY

Following the Annual Meeting, we held our second annual **Block Party** on Monet Court with an estimated 125 residents and friends attending. Special guests this year included Councilmember Nancy Ross and Michael Ferguson (Membership Manager) and Ches Gibson (Sports Club Manager) from Mission Hills Country Club (MHCC). A special thank you goes to **Welcome and Social Committee** members Frank San Juan, Norm Giere and David Leytus, along with other Montage homeowners who stepped up on the day of the event to help with setup and cleanup.

Your Montage Board of Directors will continue to provide ongoing financial and operational oversight for the Association and do our best to make decisions that maintain and position our community for the long term.

## PRESIDENT'S MESSAGE (continued)

Our current projects consist of: Improving our entry gate access; redesigning the Gerald Ford/Da Vall corner (including date palm replacement and other drought tolerant landscape considerations); repairing and/or replacing entry fountains (options); and asphalt maintenance which will occur during this year.

We plan to conduct a Homeowner survey regarding the corner and fountain projects before any action is taken.

If you have any questions or comments or would like to discuss any HOA-related issues, please give me a call, or drop me an email.

## MAY BOARD MEETING — DRAFT AGENDA

Below is the *Draft Agenda* for the May 19th Board meeting. Topics and issues to be discussed are listed. The final Agenda will be posted on the Montage Bulletin Board on the Da Vinci/Van Gogh curve and emailed to all Homeowners on Monday, May 15th.

Members may attend or engage in the meeting by phone, tablet, computer or onsite at PPM's office at 69850 Adelina Road, Cathedral City, CA 92234.

### Regular Board Meeting (Virtual Zoom Meeting) May 19, 2023 at 9:30 am (approximately)

---

#### NEW BUSINESS

1. Certification of 2023 Election Results reported by the Inspector of Elections
2. Review gate access issues and solution options.
3. Proposed granting of easement to Coachella Valley Water District for access to well site
4. Approve Conserve proposal for palm tree fertilization
5. Approve Conserve proposal for date palm pruning
6. Approve Conserve proposal for Washingtonia (Robusta and Filibusta) pruning

#### COMMITTEE REPORTS

1. Architectural Review Committee report – Norm Giere
2. Rio del Sol Ad Hoc Committee report – Scott Reese
3. Election Committee report – Scott Reese
4. Emergency Preparedness Committee report – Chuck Middleton
5. Website Committee report – Scott Reese
6. Welcome and Social Committee report – Frank San Juan

## 2023 BOARD OF DIRECTORS ELECTION

BY SCOTT REESE, Inspector of Elections



I completed the official recount of the **Montage at Mission Hills 2023 Election Ballots**. Eighty-eight (88) ballots were received and eighty-two (82) ballots were qualified. Two ballots were received after the close of the polls and disqualified without opening. Four ballots were received without signatures, on the outside envelope, and therefore they were disqualified without opening.

In reviewing the vote count remember it's important to understand that not every ballot submitted necessarily contains two board member votes, or a vote on one or both of the other measures.



### Board of Directors

Tony Michaelis (69 Votes)  
Lesley (Sue) Johnson (57 Votes)  
Gary Roman (54 votes)  
Alan Horwitz (26 Votes)

### IRS Compliance Measure

Yes (72 Votes); No (1 Vote)

Should you have any questions regarding the ballot or the election process please contact Scott Reese, HOA Inspector of Elections at [scott.o.reese@gmail.com](mailto:scott.o.reese@gmail.com)

## 2023 MONTAGE BOARD OF DIRECTORS

This year our **2023 Annual Homeowner's Meeting** was held on March 18th via **Zoom**. At this meeting the Ballots were counted for the 2023 Board of Directors. The faces you see below should be familiar to you, since the two incumbents that were running were reelected. After the meeting the new Board met and unanimously agreed to have Tony Michaelis assume the position of President,

Norm Giere as Vice President, Thomas Harp as Treasurer, Sue Johnson as Secretary, and Gary Roman as Director-at-Large.

At this time we want to thank the Montage Homeowners. It is so gratifying to know that our residents genuinely appreciate the contributions the Board has been making in keeping Montage one of the most desirable places to live in the Coachella Valley.



**Tony Michaelis**  
President



**Norm Giere**  
Vice President



**Thomas Harp**  
Treasurer



**Sue Johnson**  
Secretary



**Gary Roman**  
Director-at-Large



## GET TO KNOW YOUR 'PICASSO' STREET ARTIST

---

### PABLO RUIZ PICASSO (1881–1973)

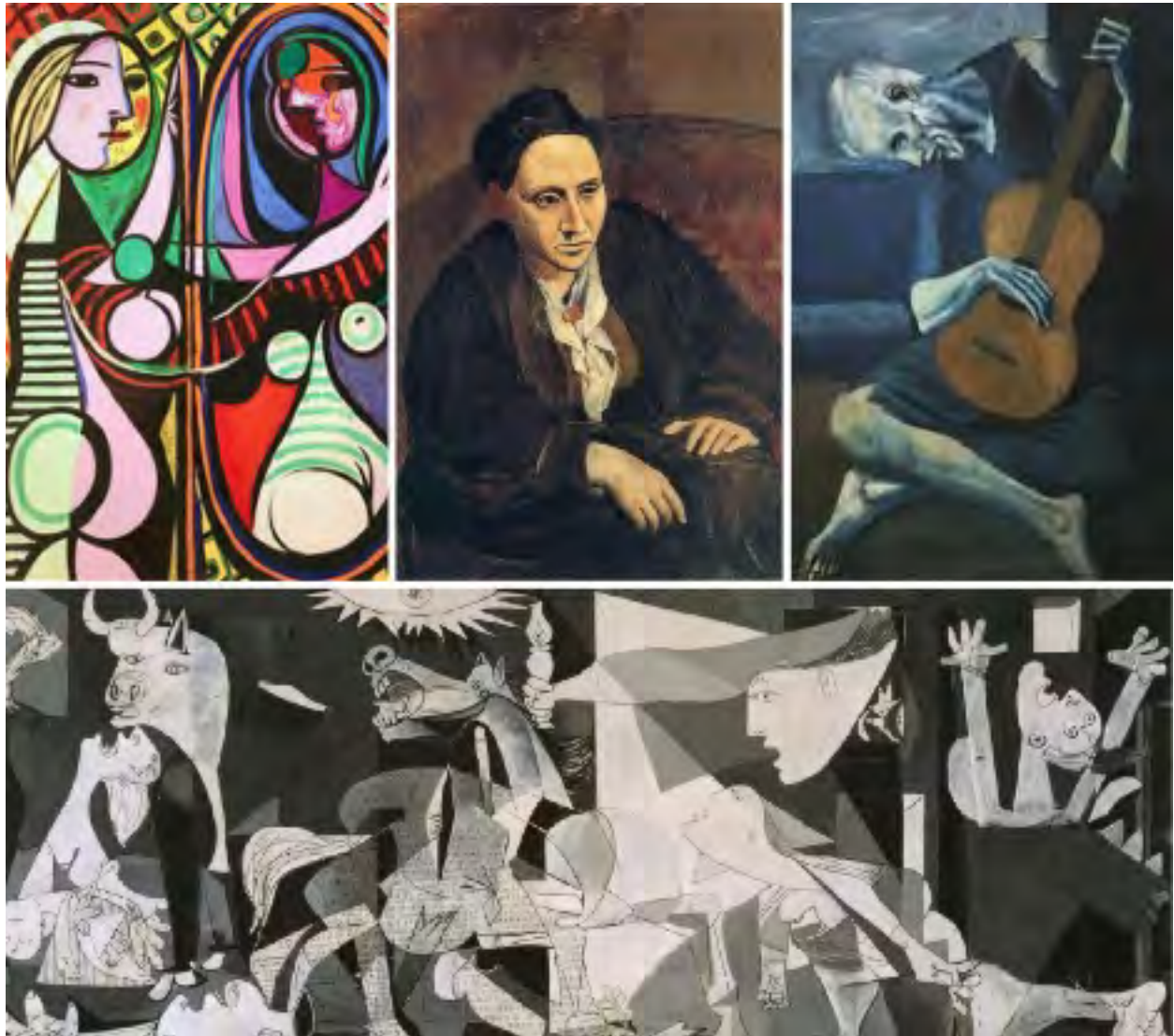
---

Pablo Ruiz Picasso was a Spanish painter, sculptor, printmaker, ceramicist and theatre designer who spent most of his adult life in France. He is regarded as one of the most influential artists of the 20th century, and he's known for co-founding the Cubist movement.

In his early years Picasso demonstrated extraordinary artistic talent, painting in a naturalistic manner through his childhood and adolescence. During the first decade of the 20th century, his style changed as he experi-

mented with different theories, techniques, and ideas. After 1906, the Fauvist work of the slightly older artist Henri Matisse motivated Picasso to start to explore more radical styles, beginning a fruitful rivalry between the two artists, who subsequently were often paired by critics as the leaders of modern art.

He was exceptionally prolific throughout the course of his long life. Picasso achieved universal renown and immense fortune for his revolutionary artistic accomplishments, and became one of the best-known figures in 20th-century art.



## ARCHITECTURAL REVIEW COMMITTEE (ARC)

BY NORM GIERE, Chair



If you take a walk around Montage you will surely notice that spring is here and that our summer is fast approaching. The Lantanas, Mexican Birds of Paradise, Red Yuccas, Tecomas, and Bougainvilleas are in full bloom and the valley is awash in brilliant color. Take a moment to enjoy the beauty of this amazing desert landscape.



The **Architectural Review Committee (ARC)** meets on the first Friday of every month to review all of the **Architectural Improvement Requests (AIRs)** submitted. Any alterations you want to make to your landscape or home's exterior requires you to fill out and submit an **AIR**, which does require Committee approval before proceeding with the work. Failure to receive approval could result in fines. And be aware that **AIRs** need to be on our Agenda for consideration, so please submit your projects the Friday before the meeting.

Homeowners should be aware that California is no longer under emergency conservation actions, and that the Coachella Valley Water District (CVWD) still encourages customers to continue saving water by making conservation a way of life. Additional water-saving tips, drought updates, and rebate

information are available by going to this link [cvwd.org/conservation](http://cvwd.org/conservation). It is our collective responsibility to take this issue seriously. Remember that the CVWD is still offering the **Residential Turf Conversion Program, up to \$3.00 per square-foot (and it requires pre-approval)**.



Once again we want to acknowledge Juan Carlos, our dedicated landscaper from **Conserve LandCare**, who has been doing an excellent job at maintaining all the common areas around Montage. Juan Carlos takes tremendous pride in his work and it shows in how terrific our Community looks.

We continue to encourage all homeowners to keep us informed of any issues that can help us maintain and improve our Community. The **ARC** committee is always looking for new volunteers. If you are interested in joining please contact Norm Giere or Sue Johnson.



## WELCOME AND SOCIAL COMMITTEE

BY FRANK SAN JUAN, Chair



The **Welcome and Social Committee** would like to thank the residents and guests of Montage for your participation and support at our second **Block Party** event.

Under the beautiful blue skies, perfect weather and a festively decorated Monet Court cul-de-sac, we mingled with neighbors and friends and were entertained by professional pianist and conductor Wayne Abravanel. We all enjoyed savory delights with an international flavor, and delicious desserts prepared or donated by many of the residents. Our City Councilmember, Nancy Ross, provided us with information about Cathedral City resources as well as guidance and support with issues facing Montage. Michael Ferguson, Membership Director, and Ches Gibson, Director of Racquet Sports, of Mission Hills Country Club, gave us valuable information about our increased membership benefits.

Tom Tousignant received a plaque thanking him for his extended service to Montage. And in addition, his wife Donna was also acknowledged for her generous support to our Community over the years.

One of the highlights of the **Block Party** was the raffle, wherein guests were gifted with donated prizes from Mission Hills Country Club, the Montage Board, and a couple of resident donors.

There are many people to thank that helped make this a successful event. First, I would like to thank my committee members, Norm Giere and David Leytus, for their dedication, hard work and support in the planning, preparation and execution of this endeavor. I would also like to thank the many volunteers who helped with the setup and cleanup, the residents who prepared or donated the wonderful desserts, the residents of Monet Court (especially Dave Busick and Larry May for letting us use their home as our staging ground), Personalized Property Management (PPM) for their generous donation, and the Montage Board for their unwavering support.

***We are looking forward to our next event!***





## MONTAGE 2023 BLOCK PARTY PICS



*Tom Tousignant and his wife, Donna, were recognized for their years of service to Montage.*



*Nancy Ross, Cathedral City Councilmember, visited with owners and enjoyed the desserts.*



*What a great day for the Community to get together and reconnect with old friends and make new ones.*



# MONTAGE 2023 BLOCK PARTY PICS





## EMERGENCY PREPAREDNESS COMMITTEE

---

BY CHUCK MIDDLETON, Chair

---



The Montage **Emergency Preparedness Committee** will begin distributing the “Emergency Preparedness materials” in May and we will announce in our next newsletter the names of

the **Block Captains**—most of whom have already volunteered. We will be contacting others in areas not yet served to ask them to consider joining us in this endeavor.

If you would be interested in joining the **Emergency Preparedness Committee**, please contact me at the following email [cmiddleton@roosevelt.edu](mailto:cmiddleton@roosevelt.edu).

## MEET OUR NEW BOARD MEMBER



My name is Lesley Johnson, more commonly known as Sue. My wife, Andie Gast, and I purchased our house on Dali Drive in April of 2021. Having retired in 2019, we have made this our permanent home. We love the size, beauty, and integrity of Montage and have made many good friends in our short time here.

I grew up in Southern California (Manhattan Beach), attending the University of California, San Diego (B.S. Economics, 1979) and the University of California, Irvine (MBA, 1999). I worked in the Automotive Industry in the area of Information Technology for 40 years while living in Long Beach, California. Although retired, I prefer to remain active, and I hope to provide my experience and perspective to the Montage HOA Board of Directors.

Although I’ve been a homeowner in Montage at Mission Hills for just under 2 years, I have taken it upon myself to be actively engaged in Montage’s HOA. Within my first year I provided input into the revision of the **Rules and Regulations**, especially as they pertain to **Short Term Rentals**. In my second year I’ve been an active member of the **Architectural Review Committee**, where I strive to provide a balance of Owner’s rights while maintaining a beautiful and cohesive community.

As a Board member, I will build upon my initial involvement by providing ongoing property and financial oversight which will benefit all Homeowners. In my career I led a department responsible for managing IT systems and services for all back-office functions for Honda across North America, including Accounting, Purchasing, Human Relations, Facilities, and Legal. I believe my broad knowledge base, budgeting experience, and interpersonal and analytical skills will be an asset as a Montage Board Member.

***I am looking forward to the next two years of working with the Board.***

## DATE PALM REPLACEMENT PLAN — UPDATE

For new homeowners who are not aware of our **Date Palm Replacement Plan** here is an explanation and update. In 2017 it was determined, by a certified arborist, that our perimeter and detention basin date palms were considered “*end of life*” and needed to be removed. The Board of Directors at the time, with homeowner approval, embarked on a plan to remove all 105 date palms and replace them with 49 Washingtonia Filibusta hybrids and 14 new date palms. To date we have removed 67 date palms, with 38 left to install. We have planted 29 hybrid palms, with 20 left to install; and planted 8 date palms with 6 left to install.

Last month 14 date palms were removed on Gerald Ford and 7 hybrids installed; and on Da Vall 7 date palms were removed and 3 hybrids installed. Spotlights were added to illuminate each new palm. We are excited to inform you that the Gerald Ford Drive palm project is now complete.

Our immediate goal is to complete the palm replacement along Da Vall. As we head into the sixth year of our ten-year date palm replacement plan we are pleased to report that we are on track to complete this project on schedule.





## IT'S THAT TIME OF YEAR AGAIN—PALM TREE PRUNING

**BY NORM GIERE, ARC Chair**

Summer is fast approaching and we all know what that means—it's time to cool off in the pool but first we have to trim our palms to avoid all those messy flowers clogging up our skimmer baskets. Not to mention the flowers that get blown into our neighbors' yards.



*Mexican Fan Palm properly trimmed*



*"Rooster Tail Cut" pruning is unacceptable*

Homeowners are aware that part of being a good neighbor is pruning your palms to avoid flowers collecting in your neighbor's yard.

Depending on the variety of palms in your yard will determine when it is time to prune. The most common palms in Montage are Date Palm, Mexican Fan Palm, California Fan Palm, Mexican Blue Palm, and Queen Palm.

Palms are pruned for two main reasons—to eliminate messy cleanups and improve aesthetics. When the palm's spikes (crown shaft) have begun flowering it is time to prune before they begin to drop fruit, flowers, and seed pods in your landscape and pool or your neighbor's.

The "**Safe Date**" to trim Mexican Fan Palms is approximately June 15. By then all the seed stalks that are going to be produced for the year should be mature enough to be removed. Trimming your trees early, before the seed stalks appear, may require you to prune the palms a second time to avoid the fruit and seed drop mess. In some years there is the chance for a late flower stalk to pop out, but this is rare with Mexican Fan Palms.

And please be aware that these are not "firm" dates. They are simply guidelines based on our experience here in the Coachella Valley. Our weather patterns and amount of rain greatly impact flower and seed production—so pruning may be required earlier.

### **SUGGESTED "SAFE DATES" FOR PALM TREE PRUNING**

**Date Palm (*Phoenix Dactylifera*) — June 1**

**Mexican Blue Fan Palm (*Brahea Armata*) — June 15**

**Mexican Fan Palm (*Washingtonia Robusta*) — June 15**

**California Fan Palm (*Washingtonia Filifera*) — July 15**

## POOL “FILTER SAVER POOL SOCKS”

In the May 2021 issue of the *Artisan* we had an article provided by Scott Reese, a Montage homeowner, regarding the effectiveness of using the “Filter Saver Pool Socks.”

And since it is that time of year again for our palms to start flowering and dropping their debris into our pools, and our neighbor’s pools, we want to remind homeowners about this product.

You can find them locally at Leslie’s Pool Supply and they are available online from Amazon. They are so easy to install. Remove and empty your skimmer basket, pull the elastic sock over and around the rim, and then

replace the basket. Check the basket routinely and replace the sock as necessary. No need to attempt to remove debris and clean the sock, the socks are so economical to purchase. One large package should easily last a year if you use them judiciously during those periods when you expect the most pool debris loading.

While you and your neighbors are waiting for the palms to be pruned, in the meantime try the “filter saver pool sock.” Many homeowners in Montage have used them with excellent results, For a link to Amazon [CLICK HERE](#)



*Skimmer basket sock ready to be replaced in ground*



*Empty skimmer basket shows debris didn't penetrate the sock*



## REMEMBER—HOT STREETS CAN BURN DOGS’ FEET

Summer is definitely here and it’s extremely important to be aware how hot our streets can get. If you have a dog, and have been taking it on daily walks, you need to adjust your schedule during the summer months due to the increasing heat. **Remember, dog’s feet can burn just like yours.** Here are some helpful tips to keep your dog safe:

- 1) Before walking touch the pavement with the back of your hand for 5 seconds. If the surface is too hot for you, then it’s definitely too hot for your dog’s paws.
- 2) Walk your dog in the early morning hours before the streets are hot.
- 3) Walk your dog in the evening when the streets have begun to cool.

## DOGS’ PAWS CAN BURN!



## GATE KIOSKS WITH 'NEW' ID PHONE NUMBERS

Just a reminder, that as a result of updating our gate kiosk phone entry systems, the numbers that show up on your phone when a guest is calling from either gate kiosk may look unfamiliar to you. PPM is not able to program a Caller ID with the new system—but you can. And it's very simple.



### THE NEW GATE PHONE NUMBERS ARE:

- **Gerald Ford gate** — (442) 360-0546
- **Da Vall gate** — (442) 360-0650

Now all you need to do is go to your **Contacts list** on your phone, create a new Contact (call it something like **GF gate** or **DV gate**), key in the appropriate phone number—**AND THAT'S IT! YOU'RE DONE.**

The next time a guest uses the kiosk name lookup (A-Z) system to contact you, your phone will ring and the ID Caller will show up on your phone as **GF GATE, DV GATE,** or whatever ID you have assigned.

*Remember when answering your phone to firmly press and hold the "9" button to allow the gate to completely open.*

## FUTURE BOARD MEETINGS



Our May **ZOOM** Board Meeting will be conducted on Friday, May 19th at 9:30 am. The Agenda and instructions will be emailed to all homeowners who have provided the **Consent Form** for receiving electronic documents (required by State law) on Monday, May 15th. If you don't receive this information please contact Tony Michaelis at [tonymichaelis@icloud.com](mailto:tonymichaelis@icloud.com) to receive the **Montage Consent Form**. Email instructions will be sent to Owners prior to the meeting.

Meeting notices and Agendas are posted on the **Community Message Board**, located on the wall at the Da Vinci/Van Gogh curve. Homeowners are encouraged to observe the meeting and are invited to participate during the **OPEN FORUM** portion. Please understand that the Board cannot act on any items that are not on the posted Agenda.

## COMMENTS & SUGGESTIONS

If you have something that you would like to share with the Community or the HOA Board please email Tony Michaelis at [tonymichaelis@icloud.com](mailto:tonymichaelis@icloud.com) for Board consideration. And if you would like to submit an article for the **ARTISAN** newsletter please send it to Norm Giere at [giereARC@gmail.com](mailto:giereARC@gmail.com).



## MONTAGE CONTACT INFORMATION

### Association Board Members

Tony Michaelis—President  
[tonymichaelis@icloud.com](mailto:tonymichaelis@icloud.com)  
(213.200.4274)  
Norm Giere—Vice President  
[giereARC@gmail.com](mailto:giereARC@gmail.com)  
(310.804.3761)  
Thomas Harp—Treasurer  
[rthomasharp3@gmail.com](mailto:rthomasharp3@gmail.com)  
(916.296.1563)  
Sue Johnson—Secretary  
[lsjohnson231@gmail.com](mailto:lsjohnson231@gmail.com)  
(562.304.6370)  
Gary Roman—Director-at-Large  
[grroman@aol.com](mailto:grroman@aol.com)  
(310.600.4279)

### Architectural Review Committee

Norm Giere—Chair  
[giereARC@gmail.com](mailto:giereARC@gmail.com)  
Lesley (Sue) Johnson—Board Liaison  
[lsjohnson231@gmail.com](mailto:lsjohnson231@gmail.com)

### Emergency Preparedness Committee

Chuck Middleton—Chair  
[cmiddleton@roosevelt.edu](mailto:cmiddleton@roosevelt.edu)  
Gary Roman—Board Liaison  
[grroman@aol.com](mailto:grroman@aol.com)

### Website Committee

Scott Reese—Webmaster  
[scott.o.reese@gmail.com](mailto:scott.o.reese@gmail.com)

### Welcome and Social Committee

Frank San Juan—Chair  
[frankcsanjuan@gmail.com](mailto:frankcsanjuan@gmail.com)  
Norm Giere—Board Liaison  
[giereARC@gmail.com](mailto:giereARC@gmail.com)

### Cathedral City Contacts

Cathedral City Emergency—911  
Cathedral City Police Department  
(Non-emergency)—760.770.0300  
Fire—760.770.8200  
Cathedral City Vacation Rental Hotline  
(Short Term)—760.553.1031

### Montage Website

[MontageatMissionHills.org](http://MontageatMissionHills.org)

### Community Management Office

Personalized Property Management (PPM)  
68950 Adelina Rd, Cathedral City, CA 92234  
Tel: 760.325.9500  
Fax: 760.325.9300

### Community Management Contacts

Shelly Ruegsegger—Sr Community Manager  
[sruegsegger@ppminternet.com](mailto:sruegsegger@ppminternet.com)  
Nick Evans—Co-Community Manager  
[nevans@ppminternet.com](mailto:nevans@ppminternet.com)  
Heidi Grasl—Phone gate-access inquiries  
[hgrasl@ppminternet.com](mailto:hgrasl@ppminternet.com)  
Mark See—Maintenance Supervisor  
[msee@ppminternet.com](mailto:msee@ppminternet.com)

### To Program Your Vehicle for Gate Entry

Thomas Harp: [rthomasharp3@gmail.com](mailto:rthomasharp3@gmail.com)  
(916.296.1563)  
Gary Roman: [grroman@aol.com](mailto:grroman@aol.com)  
(310.600.4279)

Contact Gary Roman for purchase of a gate access remote control. The current cost is \$45 per unit.

### Burrtec Waste and Recycling

Contact for any refuse issues including bin replacement: 760.340.2113 or [burrtec.com/cathedral-city](http://burrtec.com/cathedral-city)

### Cathedral City Guide and Calendar

To have a *Refuse and Recycling Guide* and *Cathedral City Calendar* mailed to your home, contact Deanna Pressgrove with the City of Cathedral City at 760.770.0369 or [dpressgrove@cathedralcity.gov](mailto:dpressgrove@cathedralcity.gov)

### Discover Cathedral City

Go to: [discovercathedralcity.com](http://discovercathedralcity.com)  
There you will find a *City Calendar* of local events, entertainment, senior services, dining options, and local news.