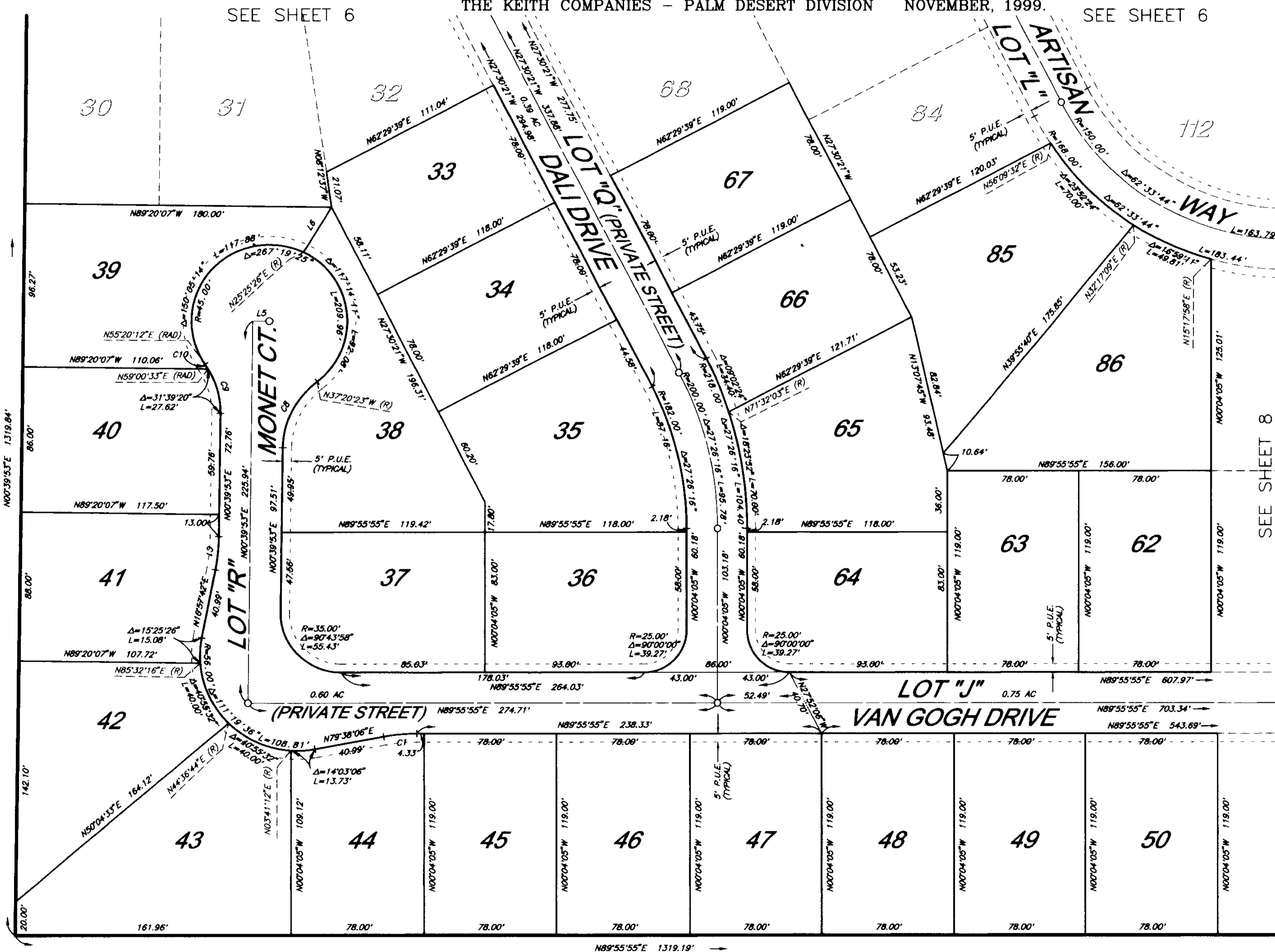


SEE SHEET 2 OF 8 SHEETS FOR SURVEYOR'S NOTES, EASEMENT NOTES, AND LOT AREAS.

Tract Map No. 29771

IN THE CITY OF CATHEDRAL CITY COUNTY OF RIVERSIDE, STATE OF CALIFORNIA.
BEING A SUBDIVISION OF THE NORTHEAST QUARTER OF THE NORTHEAST QUARTER OF SECTION 34,
TOWNSHIP 4 SOUTH, RANGE 5 EAST OF THE SAN BERNARDINO BASE AND MERIDIAN, ACCORDING TO THE OFFICIAL PLAT THEREOF.

THE KEITH COMPANIES - PALM DESERT DIVISION NOVEMBER, 1999.



Curve Table			
NO.	DELTA	RADIUS	LENGTH
C1	10°17'49"	110.00'	19.77'
C8	51°59'42"	50.00'	45.37'
C9	35°19'41"	50.00'	30.82'
C10	03°40'21"	50.00'	3.20'

Bearing Table		
NO.	BEARING	DIST.
L3	N90°00'00"E	9.51'
L6	N31°49'18"E	1.31.21'

