

SEE SHEET 2 OF 8 SHEETS FOR SURVEYOR'S NOTES, EASEMENT NOTES, AND LOT AREAS.

IN THE CITY OF CATHEDRAL CITY COUNTY OF RIVERSIDE, STATE OF CALIFORNIA.
Tract Map No. 29771

BEING A SUBDIVISION OF THE NORTHEAST QUARTER OF THE NORTHEAST QUARTER OF SECTION 34, TOWNSHIP 4 SOUTH, RANGE 5 EAST OF THE SAN BERNARDINO BASE AND MERIDIAN, ACCORDING TO THE OFFICIAL PLAT THEREOF.

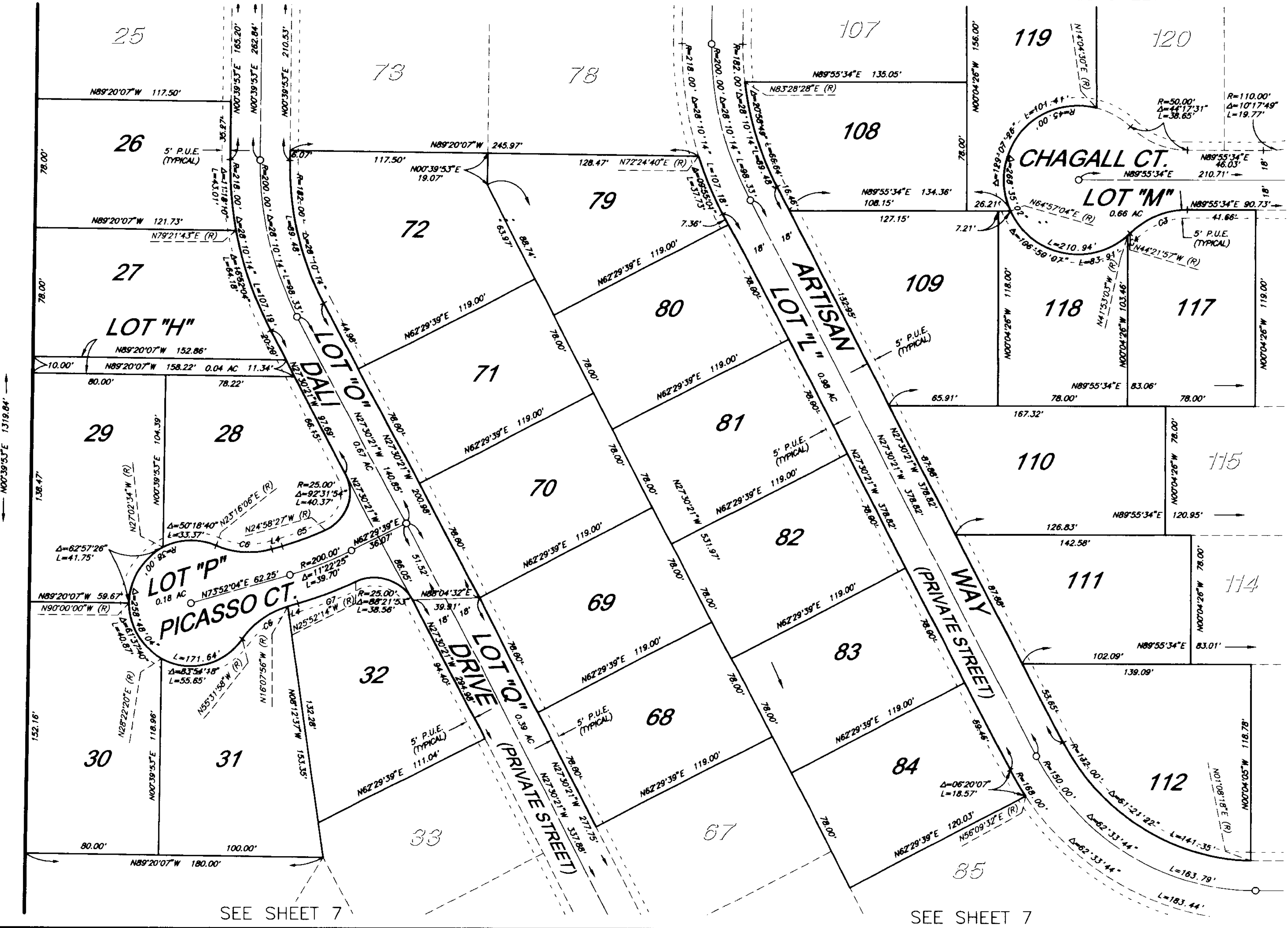
THE KEITH COMPANIES - PALM DESERT DIVISION NOVEMBER, 1999.

2001-576597
 ORIGINAL
 SHEET 6 OF 8 SHEETS

TR. 29771 311/51

SEE SHEET 5

SEE SHEET 4



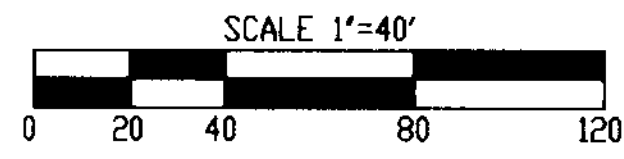
Curve Table

NO.	DELTA	RADIUS	LENGTH
C3	44°17'31"	50.00'	38.85'
C4	02°28'54"	45.00'	7.95'
C5	08°50'31"	182.00'	28.09'
C6	39°24'02"	50.00'	34.38'
C7	08°44'18"	218.00'	37.05'

Bearing Table

NO.	BEARING	DIST.
L4	N73°52'04"E	6.40'

SEE SHEET 3



SEE SHEET 7

SEE SHEET 7