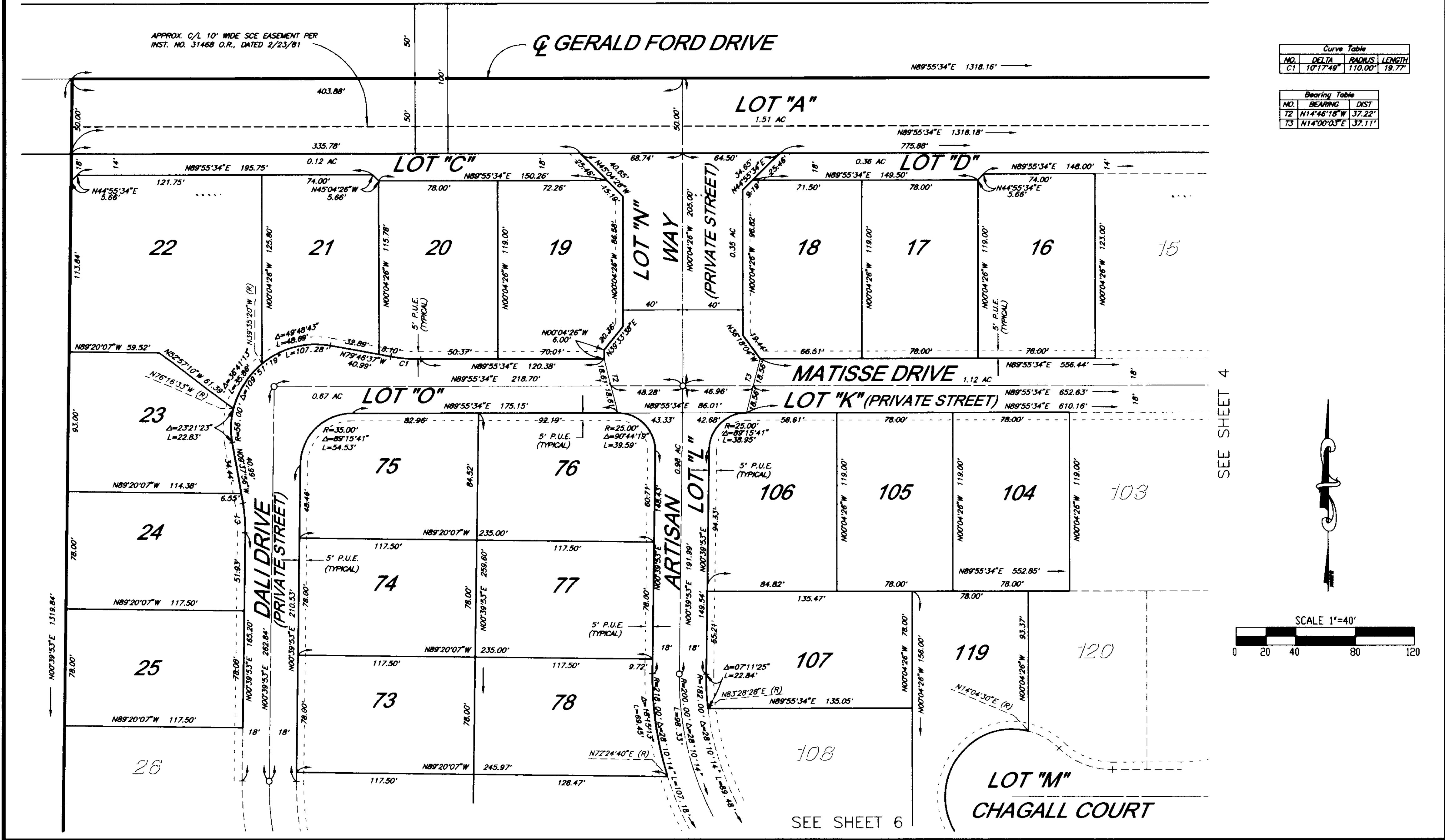


SEE SHEET 2 OF 8 SHEETS FOR SURVEYOR'S NOTES, EASEMENT NOTES, AND LOT AREAS.

IN THE CITY OF CATHEDRAL CITY COUNTY OF RIVERSIDE, STATE OF CALIFORNIA.
Tract Map No. 29771

BEING A SUBDIVISION OF THE NORTHEAST QUARTER OF THE NORTHEAST QUARTER OF SECTION 34, TOWNSHIP 4 SOUTH, RANGE 5 EAST OF THE SAN BERNARDINO BASE AND MERIDIAN, ACCORDING TO THE OFFICIAL PLAT THEREOF.

THE KEITH COMPANIES - PALM DESERT DIVISION NOVEMBER, 1999.



APPROX. C/L 10' WIDE SCE EASEMENT PER INST. NO. 31468 O.R., DATED 2/23/81

Q GERALD FORD DRIVE

LOT "A"
1.51 AC

LOT "C"
0.12 AC

LOT "D"
0.36 AC

LOT "N" WAY
(PRIVATE STREET)

MATISSE DRIVE

LOT "K" (PRIVATE STREET)

DALIL DRIVE
(PRIVATE STREET)

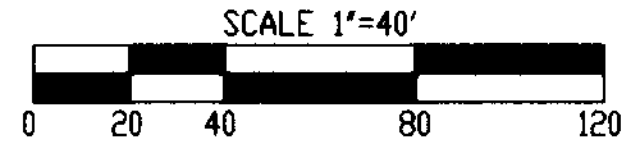
ARTISAN WAY
(PRIVATE STREET)

LOT "M"
CHAGALL COURT

Curve Table			
NO.	DELTA	RADIUS	LENGTH
C1	10°17'49"	110.00'	19.77'

Bearing Table		
NO.	BEARING	DIST
T2	N14°46'18"W	37.22'
T3	N14°00'03"E	37.11'

SEE SHEET 4



SEE SHEET 6