

SEE SHEET 2 OF 8 SHEETS FOR SURVEYOR'S NOTES, EASEMENT NOTES, AND LOT AREAS.

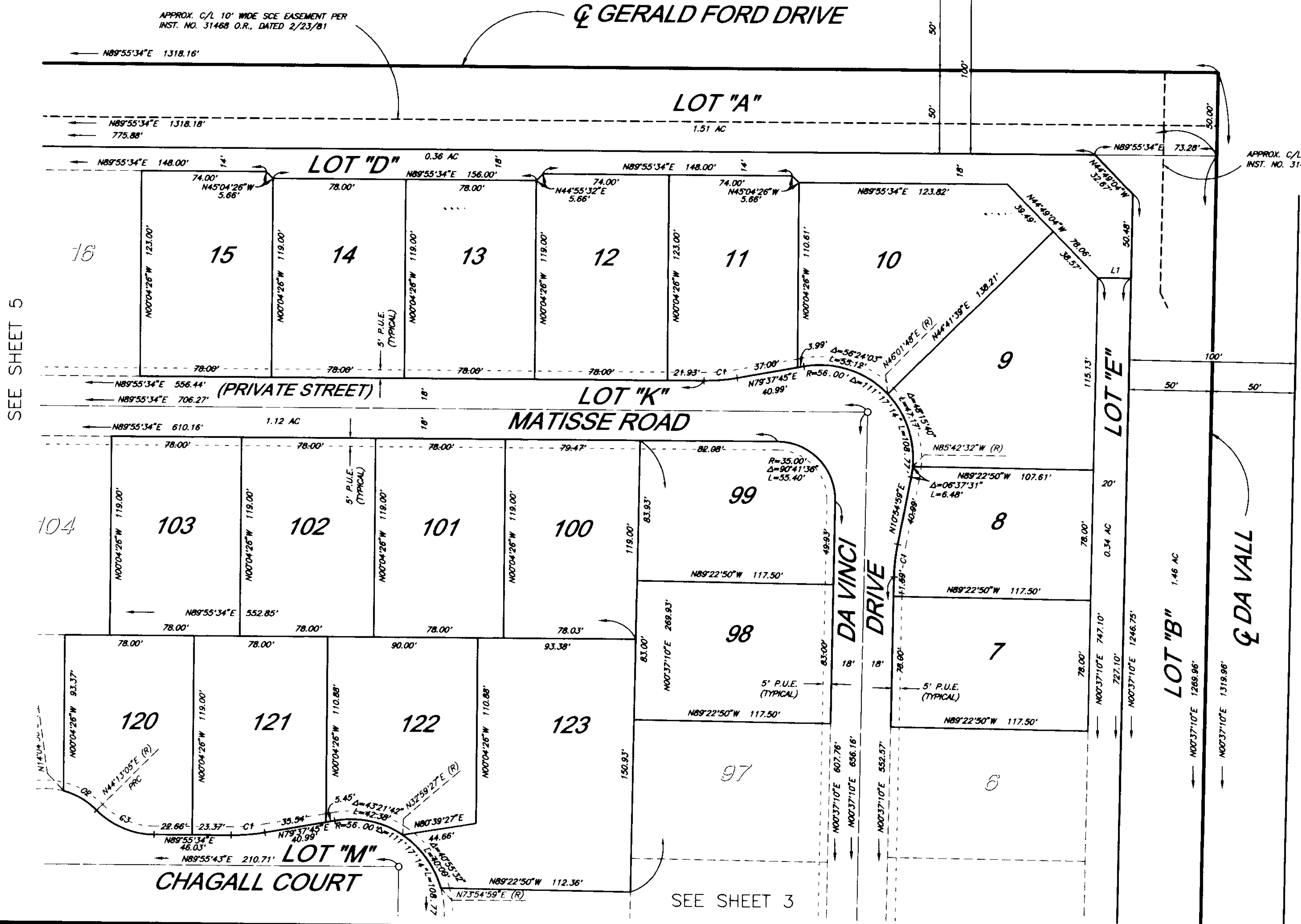
IN THE CITY OF CATHEDRAL CITY COUNTY OF RIVERSIDE, STATE OF CALIFORNIA.
Tract Map No. 29771

2001-576597
 ORIGINAL
 SHEET 4 OF 8 SHEETS

TR. 29771
 311
 49

BEING A SUBDIVISION OF THE NORTHEAST QUARTER OF THE NORTHEAST QUARTER OF SECTION 34, TOWNSHIP 4 SOUTH, RANGE 5 EAST OF THE SAN BERNARDINO BASE AND MERIDIAN, ACCORDING TO THE OFFICIAL PLAT THEREOF.

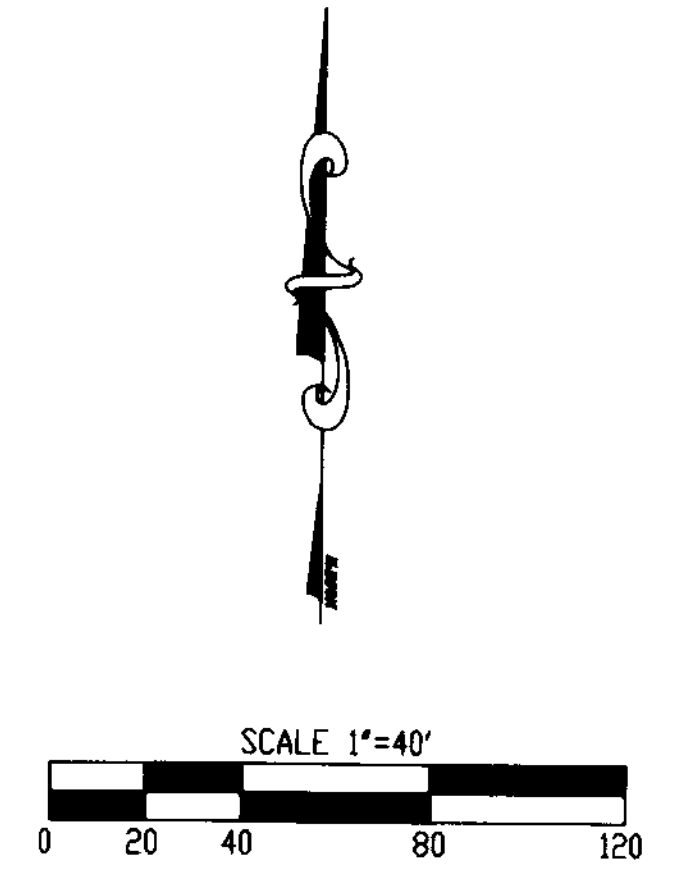
THE KEITH COMPANIES - PALM DESERT DIVISION NOVEMBER, 1999.



APPROX. C/L 10' WIDE SCE EASEMENT PER INST. NO. 31488 O.R., DATED 2/23/81

Curve Table			
NO.	DELTA	RADIUS	LENGTH
C1	10°17'49"	110.00'	19.77'
C2	30°08'35"	45.00'	23.67'
C3	44°17'31"	50.00'	38.85'

Bearing Table		
NO.	BEARING	DIST.
L1	N89°22'50"W	20.00'



SEE SHEET 5

SEE SHEET 3

C:\40692\SURVEY\MAP\2977104.dwg Mon Apr 30 07:05:47 2001 A.Dorf