

SEE SHEET 2 OF 8 SHEETS FOR SURVEYOR'S NOTES, EASEMENT NOTES, AND LOT AREAS.

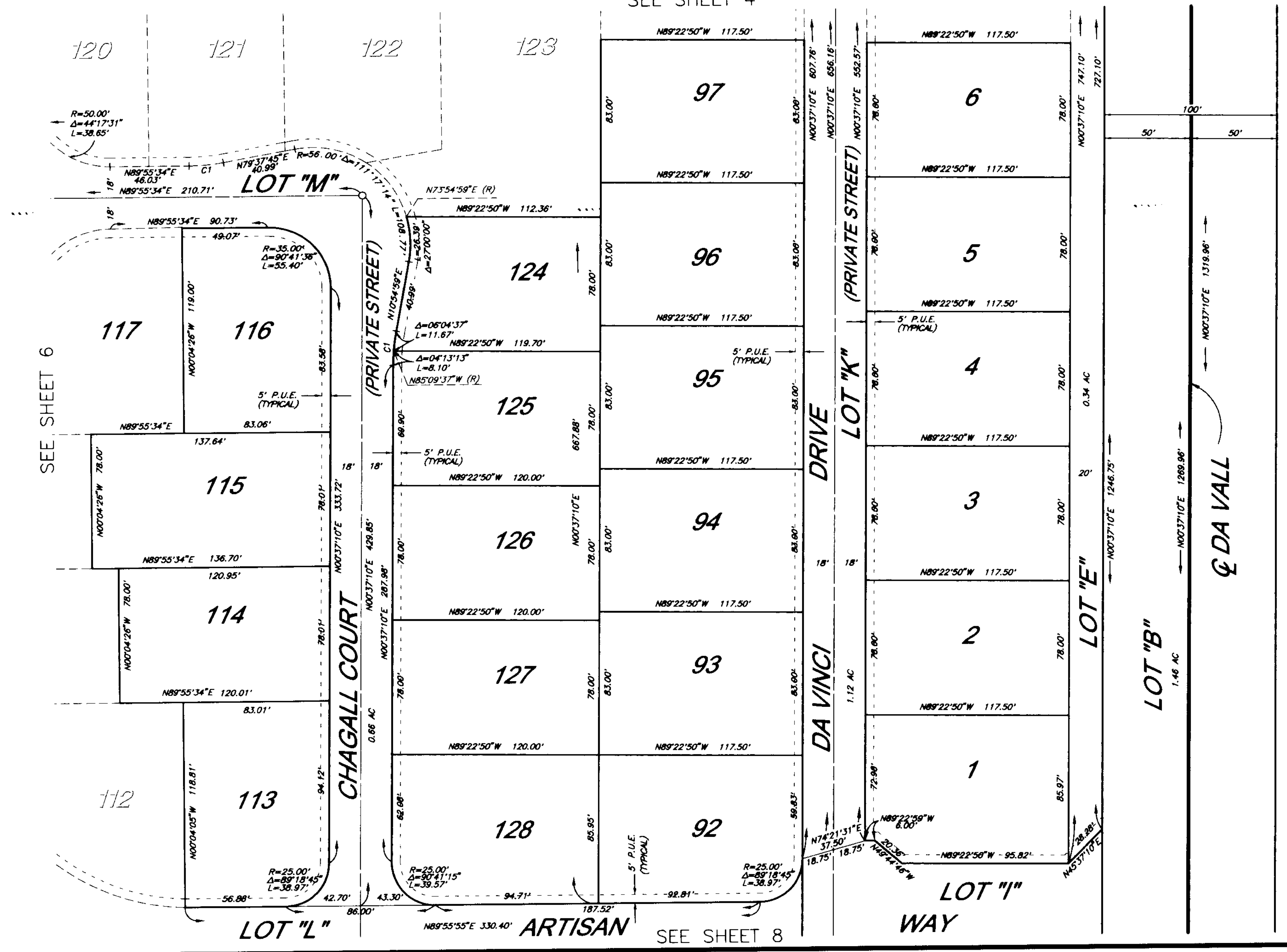
# IN THE CITY OF CATHEDRAL CITY COUNTY OF RIVERSIDE, STATE OF CALIFORNIA.

## Tract Map No. 29771

BEING A SUBDIVISION OF THE NORTHEAST QUARTER OF THE NORTHEAST QUARTER OF SECTION 34, TOWNSHIP 4 SOUTH, RANGE 5 EAST OF THE SAN BERNARDINO BASE AND MERIDIAN, ACCORDING TO THE OFFICIAL PLAT THEREOF.

THE KEITH COMPANIES - PALM DESERT DIVISION NOVEMBER, 1999.

SEE SHEET 4



Curve Table			
NO.	DELTA	RADIUS	LENGTH
C1	10°17'50"	110.00'	19.77'

