

IN THE CITY OF CATHEDRAL CITY COUNTY OF RIVERSIDE, STATE OF CALIFORNIA.

# Tract Map No. 29771

BEING A SUBDIVISION OF THE NORTHEAST QUARTER OF THE NORTHEAST QUARTER OF SECTION 34,  
TOWNSHIP 4 SOUTH, RANGE 5 EAST OF THE SAN BERNARDINO BASE AND MERIDIAN, ACCORDING TO THE OFFICIAL PLAT THEREOF.

THE KEITH COMPANIES - PALM DESERT DIVISION NOVEMBER, 1999.

### BASIS OF BEARINGS

THE BEARINGS SHOWN HEREON ARE BASED ON THE GRID BEARING "NORTH 67°15'55" WEST" BETWEEN NATIONAL GEOLOGICAL SURVEY HORIZONTAL CONTROL STATIONS "TOMITT 2" AND "RAMO" AS PER THE NATIONAL GEOLOGICAL SURVEY DATA SHEETS.

### DATUM STATEMENT

COORDINATES SHOWN HEREON ARE BASED ON THE CALIFORNIA COORDINATE SYSTEM (CCS83) ZONE VI, NAD 83 (1985.50 EPOCH ADJUSTMENT), AS PER THE NATIONAL GEOLOGICAL SURVEY DATA SHEETS.

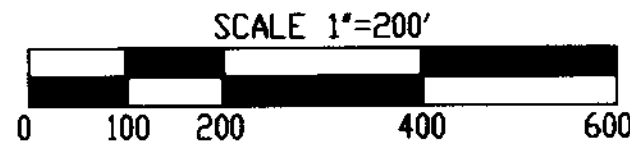
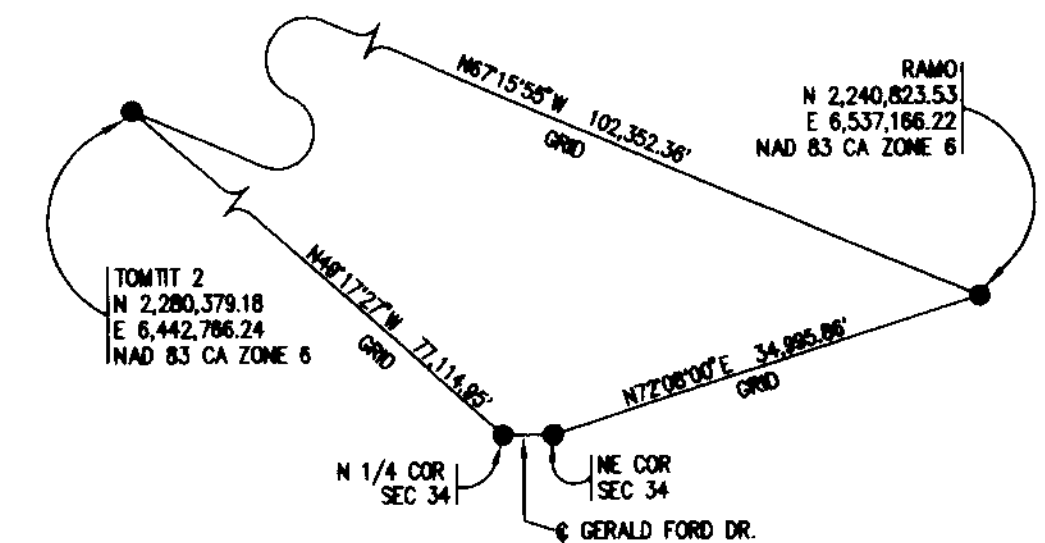
UNLESS OTHERWISE NOTED, ALL DISTANCES SHOWN HEREON ARE GROUND. TO OBTAIN GRID DISTANCES, MULTIPLY GROUND DISTANCES BY 0.999976795.

### SURVEYOR'S NOTES

- INDICATES FOUND MONUMENT AS NOTED
- INDICATES SET 1" IRON PIPE, FLUSH, WITH PLASTIC PLUG STAMPED "PLS 6697" IN DIRT AREAS OR SET LEAD AND TAG STAMPED "PLS 6697" IN CONCRETE AREAS AND TOP OF WALLS. SET COPPERWELD MONUMENT STAMPED "PLS 6697" IN ASPHALT AREAS.
- MONUMENTS TO BE SET AT REAR LOT CORNERS, REAR AND SIDE LOT LINE ANGLE POINTS AND ENDS OF CURVES; THE PROLONGATION OF THE SIDE LOT LINES AT THE TOP OF CURB AS DESCRIBED ABOVE.
- EXISTING BOUNDARY MONUMENTS THAT ARE DESTROYED DUE TO CONSTRUCTION WILL BE RESET AS STATED ABOVE.
- ALL MONUMENTS ARE SET ACCORDING TO COUNTY STANDARDS DATED 1992-93.
- ALL MONUMENTS SHOWN AS "SET" SHALL BE SET IN ACCORDANCE WITH THE TERMS OF THE MONUMENTATION AGREEMENT FOR THIS MAP, UNLESS OTHERWISE NOTED.

- (R) INDICATES RADIAL BEARING
- ( ) INDICATES RECORD DATA PER MB 289/45-46
- [ ] INDICATES RECORD DATA PER MB 95/3-4
- 5'PUE INDICATES 5' WIDE PUBLIC UTILITY EASEMENT DEDICATED HEREON.
- THIS MAP CONSISTS OF LOTS 1 THROUGH 128 AND LETTERED LOTS "A" THROUGH "S".
- GROSS AREA = 39.95 ACRES

### HORIZONTAL CONTROL DIAGRAM



LOT NO.	AREA	LOT NO.	AREA
1	9,921.72 SF	100	9,371.25 SF
2	9,185.00 SF	101	9,282.00 SF
3	9,185.00 SF	102	9,282.00 SF
4	9,185.00 SF	103	9,282.00 SF
5	9,185.00 SF	104	9,282.00 SF
6	9,185.00 SF	105	9,282.00 SF
7	9,185.00 SF	106	9,872.71 SF
8	8,872.88 SF	107	10,595.17 SF
9	11,939.11 SF	108	9,718.71 SF
10	13,255.08 SF	109	11,390.52 SF
11	9,369.52 SF	110	11,471.95 SF
12	9,596.00 SF	111	9,542.00 SF
13	9,282.00 SF	112	11,787.80 SF
14	9,282.00 SF	113	9,648.13 SF
15	9,596.00 SF	114	9,387.50 SF
16	9,596.00 SF	115	10,889.21 SF
17	9,282.00 SF	116	9,898.87 SF
18	9,170.81 SF	117	8,108.12 SF
19	9,638.54 SF	118	7,770.47 SF
20	9,250.54 SF	119	9,049.87 SF
21	9,077.80 SF	120	8,696.18 SF
22	16,222.06 SF	121	9,087.44 SF
23	9,280.77 SF	122	10,150.79 SF
24	9,130.54 SF	123	14,993.85 SF
25	9,185.00 SF	124	8,894.57 SF
26	9,224.98 SF	125	9,359.20 SF
27	10,513.80 SF	126	9,380.00 SF
28	10,158.90 SF	127	9,380.00 SF
29	10,580.86 SF	128	10,261.99 SF
30	11,894.11 SF	A	85,908.80 SF
31	11,519.16 SF	B	63,752.95 SF
32	10,721.18 SF	C	5,409.11 SF
33	9,134.78 SF	D	15,711.79 SF
34	9,204.00 SF	E	14,742.05 SF
35	12,447.96 SF	F	7,171.28 SF
36	9,859.87 SF	G	15,418.37 SF
37	9,894.98 SF	H	1,555.38 SF
38	11,799.37 SF	I	15,070.74 SF
39	11,838.10 SF	J	32,848.90 SF
40	10,042.00 SF	K	48,822.70 SF
41	9,982.48 SF	L	42,554.56 SF
42	10,884.55 SF	M	28,883.43 SF
43	13,238.89 SF	N	15,371.71 SF
44	8,917.61 SF	O	29,210.92 SF
45	9,281.98 SF	P	7,919.79 SF
46	9,281.98 SF	Q	9,281.98 SF
47	9,281.98 SF	R	17,091.80 SF
48	9,281.98 SF	S	26,173.82 SF
49	9,282.00 SF		22,368.58 SF
50	9,282.00 SF		
51	9,282.01 SF		
52	9,282.01 SF		
53	9,282.01 SF		
54	9,282.00 SF		
55	8,854.39 SF		
56	9,102.68 SF		
57	9,534.27 SF		
58	9,282.00 SF		
59	9,282.00 SF		
60	9,282.00 SF		
61	9,282.00 SF		
62	9,282.00 SF		
63	9,282.00 SF		
64	9,859.87 SF		
65	11,880.12 SF		
66	9,312.84 SF		
67	9,282.00 SF		
68	9,282.00 SF		
69	9,282.00 SF		
70	9,282.00 SF		
71	9,282.00 SF		
72	13,191.20 SF		
73	9,185.00 SF		
74	9,185.00 SF		
75	9,587.23 SF		
76	9,862.09 SF		
77	9,185.00 SF		
78	9,412.12 SF		
79	9,288.59 SF		
80	9,282.00 SF		
81	9,282.00 SF		
82	9,282.00 SF		
83	9,282.00 SF		
84	9,288.33 SF		
85	13,387.04 SF		
86	14,839.57 SF		
87	9,370.48 SF		
88	9,282.00 SF		
89	9,282.00 SF		
90	9,282.00 SF		
91	9,821.90 SF		
92	9,885.38 SF		
93	9,752.50 SF		
94	9,752.50 SF		
95	9,752.50 SF		
96	9,752.50 SF		
97	9,752.50 SF		
98	9,752.50 SF		
99	9,675.46 SF		

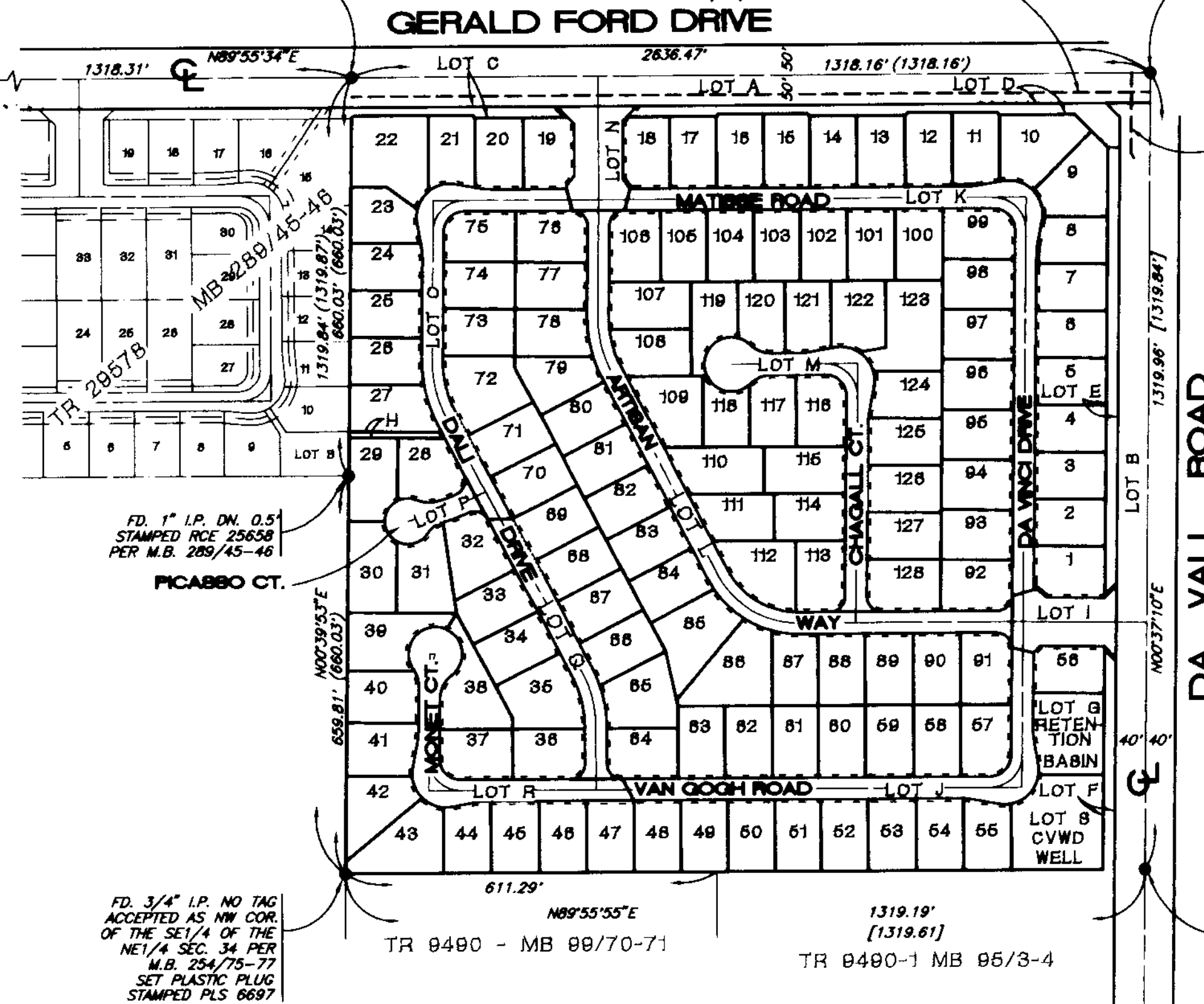
N 1/4 SECTION 34  
FD. 1" I.P. STAMPED  
RCE 25658, DN. 0.1'  
PER MB 137/93-96  
ACCEPTED AS N 1/4  
CORNER SECTION 34

FD. COPPERWELD, FLUSH  
STAMPED PLS 6697  
PER MB 289/45-46  
ACCEPTED AS E 1/16  
CORNER SECTION 34

APPROX. C/L 10' WIDE SCE EASEMENT  
PER INST. NO. 31488 O.R., DATED  
2/23/81

NE COR SECTION 34  
FD. COPPERWELD IN  
MONUMENT WELL DN. 0.4'  
STAMPED U.S.C.E. L.A. DIST.  
AS PER MB 289/45-46  
ACCEPTED AS NE COR. SECTION 34

APPROX. C/L 10' WIDE SCE EASEMENT  
PER INST. NO. 31488 O.R., DATED  
2/23/81



FD. 1" I.P. DN. 0.5'  
STAMPED RCE 25658  
PER M.B. 289/45-46

FD. 3/4" I.P. NO TAG  
ACCEPTED AS NW COR.  
OF THE SE 1/4 OF THE  
NE 1/4 SEC. 34 PER  
M.B. 254/75-77  
SET PLASTIC PLUG  
STAMPED PLS 6697

FD. COPPERWELD IN  
MONUMENT WELL DN. 0.5'  
STAMPED U.S.C.E. L.A. DIST.  
NO REFERENCE, ACCEPTED  
AS NE COR. OF THE SE 1/4  
OF THE NE 1/4 SEC. 34