



artisan

HOMEOWNERS ASSOCIATION NEWSLETTER

SEPTEMBER 2020



Da Vinci



Monet



Van Gogh



Matisse



Picasso



Chagall



Dali

MISSION HILLS "STRAW POLL" RESULT

BY TONY MICHAELIS, Vice President

The Board of Directors, at their July meeting, gave direction to conduct a "Straw Poll" of homeowners to determine membership support for a 10-year renewal of the Mission Hills Country Club (MHCC) Social/Fitness contract. The poll was conducted over two weeks from August 10–24. We received 102 responses—that is 80% of Montage owners. The final tally was **78 in support of renewal**, and 24 against renewal—that is a margin of three to one. The Board has put this item on the September 11 Agenda for discussion. The Board sincerely thanks Scott Reese for creating and conducting the poll. For more details on the Poll, please go to the *Neighborhood News Blog* on the *Montage* website by [Clicking Here](#).



MISSION HILLS EXPANDS BENEFITS

BY SCOTT REESE, Webmaster



John Conroy, Membership Manager at Mission Hills Country Club, has recently informed the *Montage* Board that on September 1 homeowner's benefits will include tennis, pickleball, croquet and swimming pool access, in addition to their current dining and fitness benefits. These additional benefits are included at no additional cost for the remaining year. For more details on the benefits and how to access them go to the *Neighborhood News Blog* on the *Montage* website [Clicking Here](#).

PRESIDENT'S MESSAGE

BY CURT BEYER, President



Currently, I am involved with several volunteer organizations, and in these unusual times of social distancing that simply means meetings via a number of virtual programs. I also attend trainings and updates on subjects related to those groups. It really keeps one busy trying to keep up on knowing which day of the week and date it is. Surprisingly, the days go by all too quickly and the months seem to do the same. It is hard to believe we are at about 200 days into these interesting times. Other than doctor appointments, pharmacy and grocery trips, there have been limited out of home ventures.

Observing the guidelines of face mask protocols and social distancing is making us eager to see our friends and neighbors. I am limited in my ability to walk or stand for even short periods, so staying home is much the same as before all of this began—and why I seldom get to see the neighbors. So many homes in Montage have changed ownership in the last couple of years that I would not recognize many of our new owners. However, our Welcome Committee has been personally handing out the **Welcome Packet** to all of the new owners and explaining its contents as well as providing answers to any of their questions that they have about our community.

On the last page of this newsletter you will find contact information for the Board of

Directors, Committee Chairs, and our Community Property Management team (PPM). In addition, the Montage website is full of timely information that will assist in answering many of your questions. If you have any issues or concerns please contact the appropriate person or PPM directly.

The next Montage Board meeting is Friday, September 11th and will be conducted via ZOOM. Homeowners will receive an email invite with login instructions on how to join the meeting. At the July Board meeting the members voted to continue having our meetings via ZOOM due to the fact that we had such an increase in homeowner participation. We look forward to “seeing” you online.

Our Board meeting Agenda includes:

- Discussion of Mission Hills Country Club “Straw Poll” regarding *Social/Fitness Membership* renewal
- Approval of proposed Bid Package for Perimeter Palm Tree Lighting Contract
- Approval of proposal for pumping dry-well in the detention basin
- Set date for 2021 Annual Homeowner meeting for March 20, 2021
- Appoint Scott Reese as *Inspector of Elections* for the 2021 Board member election
- Approve the *Board Self-Nomination* form for the election of the 2021 Board of Directors to be sent by October 1, 2020
- Discuss *Conserve LandCare* proposal for perimeter landscape maintenance

GET TO KNOW YOUR BOARD

We installed a new Montage Board of Directors at our Annual Homeowners Meeting in April. Below is a brief background on the current Board members.



Curt Beyer—President

I moved into Montage—a gem in the desert—over 10 years ago with my husband Ken. My background is in administration/management, teacher education, and financial services. We both have become Master Gardeners through UC Riverside’s program. I serve on the board of the Coachella Valley Disaster Preparedness Network (CVDPN) and am CERT trained. I also serve on various committees at the Mission Hills Country Club.



Tony Michaelis—Vice President

My husband Frank and I moved into Montage 3 years ago. We currently split our time, along with our dog Barnaby, between our homes in Los Angeles and Montage. I am a retired hospital administrator with my last 20 years at UCLA Medical Center. I grew up in the Bay Area and received my MBA from San Francisco State University. I began as a member of the ARC and then became its Chair prior to joining the Board.



Tom Tousignant—Treasurer

I have been on the Montage Board for 15 years, and I am still invigorated with the opportunities and challenges provided by serving on the Board. I have a Bachelor’s degree in Civil Engineering and a Master’s Degree in Business Administration. I am a registered Civil Engineer, Traffic Engineer, as well as a General Contractor. My contracting business was primarily involved in providing maintenance for HOAs and commercial facilities.



Norm Giere—Secretary

I moved to Montage 3 years ago, as a fulltime resident, with my husband Mark and our dog Toshi. We moved from Los Angeles where I attended UCLA. After graduation I worked in the Graphic Design field for over 45 years. Mark and I are now retired and love living in the desert—and especially living in Montage. We have met so many great neighbors and the pride of ownership is obvious when you pass through our gates.



Gary Roman—Director-at-Large

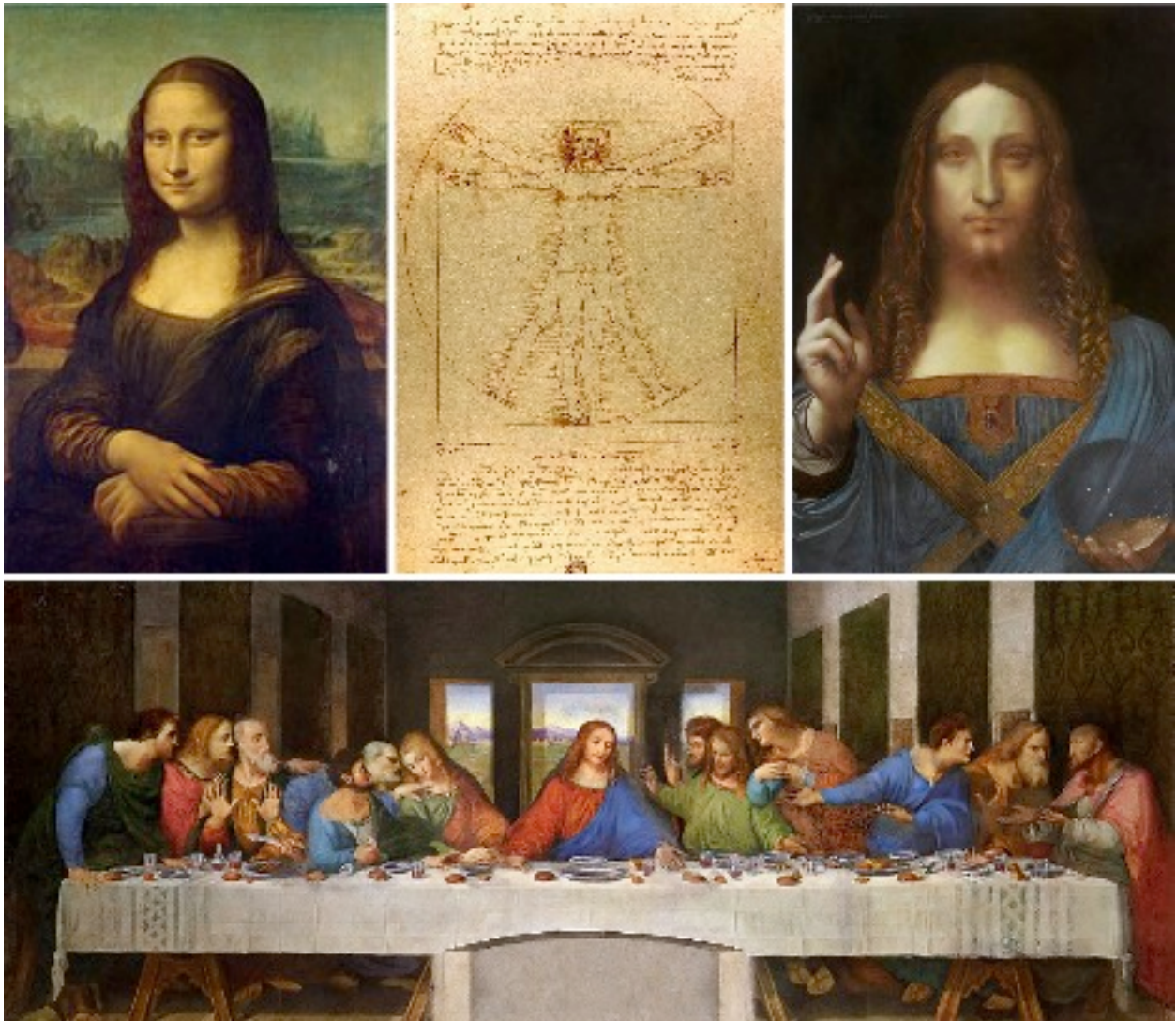
I am originally from the Long Beach, California area and the local desert area has been part of my life since 1980, weekends from 1991–2005, and three days a week since 2006. We landed in Montage almost five years ago, and since COVID-19 happened it has become “home.” The reason for selecting this home goes without saying. I truly hope you have found here what Frank and I have found. *“I Can See Rancho Mirage from My House.”*

GET TO KNOW YOUR “DA VINCI” STREET ARTIST

LEONARDO DA VINCI (1452–1519)

Leonardo da Vinci was an Italian polymath of the Renaissance whose areas of interest included invention, drawing, painting, sculpture, architecture, science, music, mathematics, engineering, literature, astronomy, botany, paleontology, and cartography. He has been called the father of paleontology, ichnology, and architecture, and is widely considered one of the greatest painters of all time.

Leonardo is renowned primarily as a painter. The *Mona Lisa* is the most famous of his works and the most popular portrait ever made. The *Last Supper* is the most reproduced religious painting of all time and his *Vitruvian Man* drawing is regarded as a cultural icon as well. *Salvator Mundi* was sold for a world record \$450.3 million — the highest price ever paid for a work of art. Leonardo’s paintings and drawings, together with his notebooks, which contain sketches, scientific diagrams, and his thoughts on the nature of painting, is a contribution to later generations of artists.



ARCHITECTURAL REVIEW COMMITTEE (ARC)

BY NORM GIERE, Chair



The **ARC** meets monthly to review all new **AIRs** (Architectural Improvement Requests) and also conduct periodic landscaping, lighting, and community area inspections.

Based on our governing documents, the ARC is charged with maintaining the aesthetic qualities of our community through a process of review and peer approval. We believe that this process has helped keep Montage looking great.

We want to thank the vast majority of homeowners who are submitting AIRs for exterior home and landscape changes. The Committee meets on the first Friday of each month and posts Agendas on the Monday prior to our meeting. AIRs need to be on our Agenda for consideration, so please submit your projects the Friday before the meeting date.

Further information can be found on our website or by contacting Norm Giere or Tony Michaelis (contact information on last page of the newsletter). In addition, minutes of all our meetings are posted on our website and all homeowners are welcome to attend our meetings.

The following items are highlights of the ARC's current activities:

Perimeter Lighting—We have developed a perimeter lighting “Scope of Work” bid package which will be sent out to multiple contractors. The bid package includes adding spotlights to the 19 newly-installed palms along Gerald Ford and Da Vall Drive.



Palm Tree Trimming—The ARC committee would like to personally thank everyone for pruning their palm trees in a timely manner. The palms look great. It's evident that we are good neighbors and take pride in our neighborhood. So, kudos to you all!

Landscape Maintenance—We conduct monthly property walks with *Conserve*, our landscape contractor. These walks aid us in making sure that the landscape looks great and our costs are managed properly. If you see any perimeter or detention basin issues that need addressing please contact Norm Giere or Tony Michaelis.

Mailboxes—We have replacement locks for the package delivery boxes. If anyone encounters a problem with the package box locks (i.e. the key doesn't work, the lock is damaged, or the key is broken) please let us know so that repairs can be made quickly. Remember that owner's personal mailbox locks are the responsibility of the homeowner if they need repair.



(continued on next page)

Residential Lighting—We have a new lighting contractor, *Grayco Electric*, who will be doing our monthly light inspections and repairs. Homeowners, remember that



your “original” Focus yard lights are the only lights covered by the HOA. If your “original” lights are not working properly (burned-out bulb, broken fixture, stay on for 24 hours, don’t come on at night, etc.)

please send an email to Mark See at PPM MSee@ppminternet.com and he will issue a work order. And please be aware that repairs are done monthly.

We continue to encourage all homeowners to keep us informed of any issues you identify that can help us maintain and improve our community. We also have a *Montage Homeowner Concern Form* which can be downloaded from our website MontageatMissionHills.org. Please use this form to alert us to pressing issues.

We are always looking for volunteers to join our committees. If you are interested in joining please contact the Committee Chair listed on the **Montage Contact Information** page.

EMERGENCY PREPAREDNESS COMMITTEE

BY CHUCK MIDDLETON, Chair



Whew! The shaking has stopped and you are just fine as are all others in your household. The aftershocks can be pretty intense, too, so don’t forget that you may well be down on your knees more times in the future.

That said, what will you need to have on hand in order to begin to deal with the consequences to your home of all that shaking and rolling? Last month I suggested some initial steps you should take but doing that successfully without injuring yourself presupposes that you have in stock the necessary *Personal Protective Equipment*, or PPE.

I am a big fan of Murphy who had not one but several laws. At least two apply here:

“Murphy’s First Law: *Anything that can go wrong will go wrong....* [And] **Murphy’s Fourth Law:** *If there is a possibility of several things going wrong, the one that will cause the most damage will be the one to go wrong. Corollary: If there is a worse time for something to go wrong, it will happen then.*” All of these can be found on the web.

We already know that the **“BIG ONE”** will happen. So much for Law 1. But have you thought about the Fourth Law and especially its corollary? Picture this scenario: 2:37 a.m. on a Saturday night in the middle of August, pitch black outside and likely to remain so for hours, daytime highs floating around 110° and nightly lows in the 80s. This is where PPE preparedness becomes a matter of survival, at least for some.

(continued on next page)

EMERGENCY PREPAREDNESS COMMITTEE (continued)

I have been going to seminars and reading up on all that “stuff” that you need to have on hand starting yesterday. The lists are informative and generally include the same items, though some are longer and some shorter depending on variables that I’m not sure I fully comprehend—at least yet!

I also know, being a student of history, that people over the centuries do not reliably act in a timely fashion on information that is given to them, even by people they trust and know personally. This proclivity seems to increase the more extensive and more complex that information is.

In that spirit, therefore, here’s my own personal distillation of the essential PPE you should have on hand and why each item is important.

Inside your house it is certain that glass will be everywhere. If everything falls over, all the cupboards open up, the pictures come off the walls, then lots of things will break. It



will be heart wrenching and dangerous to move around to assess the damage. Your first item of protection, therefore, is having a pair of **shoes** with sturdy soles so that you don’t lacerate your feet as you walk about.

Second, you will need a **flashlight** or several, next to your bed and elsewhere. Remember Murphy’s Laws!



I recommend one in each bedroom and 2–3 others located in strategic places around your home.

Third, **leather gloves**. Not those flimsy kind of gloves that enable you to pull small weeds up by their roots or those rubber ones you wear when you do dishes or mop the floor, but really good leather-palmed gloves that are difficult for glass to puncture. After all, you do have a mess to deal with!



Fourth, **masks** are also important, because dust and debris will be everywhere and you will need to keep the air you breathe as clean as possible. Thanks to COVID-19 you may already have a supply, so sustain the levels even after a vaccine is developed.



For me, these are the basics. The experts agree, finally, that all these should be in a “disaster supplies” container, preferably under your bed. Don’t you worry, the boogie man will share the space so just shove it under there.

And if you would like to know more, please start by joining the Montage **Emergency Preparedness Committee**. I’d love to have your company. I can be reached by emailing me at cmiddleton@roosevelt.edu

WEBSITE COMMITTEE

BY SCOTT REESE, Webmaster



The content of the **Montage** website continues to grow and be updated with useful and interesting information related to neighborhood life and homeownership. New site search capabilities have been added to facilitate word searching Board Minutes and Newsletters back to 2004. Also included in recent months are new forms, a Board Code of Ethics, architectural and engineering plans, historical documents, and more. For more details on the upgraded benefits and how to access them go to the **Neighborhood News Blog** on the **Montage** website by [Clicking Here](#).

WELCOME COMMITTEE

BY FRANK SAN JUAN, Chair



On behalf of our **Welcome Committee** I would like to acknowledge and welcome our newest residents that have recently joined our community:

- **Helen Lombard and Sandra Shapiro at 36133 Artisan Way**
- **Margrit Albrecht at 36371 Dali Drive**
- **Mark Van Pykstra and David Loyola at 69859 Van Gogh Road**
- * **Bob Balthazor and Kevin Caples at 69896 Van Gogh Road**

In order to foster a greater community spirit, especially during these times when many of us are feeling isolated, please be kind and say hi to your neighbors. It means a lot.

Welcome Home

We wish you peace and enjoyment in your new homes!

*As a testament to the qualities of living in our highly desirable community, we would like to re-welcome back Bob and Kevin, who looked at other neighboring areas, but in the end, decided that our community suited them best and decided to just move from Dali Drive to Van Gogh Road.

WALK TO END ALZHEIMERS

BY TERRY PALMER, Montage Homeowner



The Alzheimer's Association annual **Walk to End Alzheimer's®** scheduled for November 14, 2020, is the world's largest event to raise awareness and funds for Alzheimer's care, support and research. This year the **Walk** is everywhere—on every sidewalk, track and trail.

The Alzheimer's Association has served the Coachella Valley for over 20 years with free support programs and services. COVID-19 now places an even greater burden on our families impacted by Alzheimer's and other dementia. My mother passed from Alzheimer's and my father resides in memory care — I know how difficult this journey is.

Please join **Team Montage** to support the **Walk to End Alzheimer's** and together we can ensure that these critical local programs and services continue when families need them most.

If you have any questions or want more information please call me, Terry Palmer, at 760.324.1678 or you can email me at tpspirit@yahoo.com. Please join **Team Montage** at act.alz.org/goto/TeamMontage

FRIENDLY REMINDERS

AIR (Architectural Improvement Request)

Just a reminder that an AIR form must be submitted and approved before beginning any exterior work. This includes planting, painting, solar systems, and yard art.

Blowers

Please instruct your gardeners not to blow yard debris onto a neighbors' yard, and that they must sweep up and collect all debris blown into the street. Please ask your gardeners and for their cooperation.

Dogs

Please remember to pick up your dog's waste and dispose of it properly. Do not pick it up and put it in a neighbor's bushes for someone else to dispose of for you. This behavior warrants a fine.

Garage Doors

Please close your garage door after exiting or entering. This is for your safety as well as neighborhood aesthetics.

Garbage Collection

Put trash bins out on Monday for Tuesday pickup, and bring back in on Wednesday. Refrain from putting liquids in your bins because leaks can stain our streets. For more information you can go to Burrtec's website: burrtec.com/cathedral-city

Landscaping

Please make sure that your front yard trees are trimmed to provide proper clearance for the street sweeper. All trimmings that fall outside your property must be collected.

Pool Draining

Please contact PPM before proceeding. They need to be made aware of additional water being channeled into the detention basin and possible interference with planned projects.

Service Worker's Hours

Remember that workers' hours are from 7 am to 5 pm, Monday thru Saturday.

DELAY DRAINING POOLS IN SEPTEMBER



The Board is proposing to pump and treat the community dry well and catch basins at the detention basin during September. The amount our Association pays is based on the gallons of water that are removed. Please delay any pool draining or other excessive discharges of water into the streets or curb gutters during September. It will be a cost savings for our community.

FUTURE BOARD MEETINGS



Our September **ZOOM** Board Meeting will be conducted on Friday, September 11th at 9:30 am. The Agenda and instructions will be emailed to all homeowners who have provided the *Consent Form* for receiving electronic documents (required by State law) on Monday, September 7th. If you don't receive this information please contact Tom Tousignant at td2znot@aol.com to receive the *Consent Form*. Our November **ZOOM** Board Meeting will be on Friday, November 13th at 9:30 am. Email instructions will be sent before the meeting.

Meeting notices and Agendas are posted on the Community Message Board, located on the wall at the Da Vinci and Van Gogh curve. Homeowners are encouraged to observe the meeting and are invited to participate during the **OPEN FORUM** portion. Please understand that the Board cannot act on any items not on the posted Agenda, but will consider homeowner's input for future Board Agendas.

SHORT-TERM VACATION RENTALS (STVRs)

On August 26 the Cathedral City Council took the first steps to abolish STVRs. There are two exceptions: 1) Homes governed by HOAs that currently permit STVR use (Note: Montage CC&Rs prohibit STVRs), and 2) Home-sharing vacation rentals where the house is the owner's primary residence and rents out a portion of the property. For City information on proposed ordinance changes, [Click Here](#).

COMMENTS and NEWSLETTER SUGGESTIONS

If you have something that you would like to share with the community or the HOA Board please email Tom Tousignant at td2znot@aol.com for Board consideration. And if you would like to submit an article for the **ARTISAN** newsletter please send it to Gary Roman and Norm Giere. We encourage and welcome your participation to make our newsletter reflect our community.



2021 ANNUAL HOMEOWNERS MEETING & ELECTION

BY TOM TOUSIGNANT and SCOTT REESE



The Board will be considering setting March 20, 2021 as the date for the ***Annual Homeowner Meeting and Election*** during their September meeting. The Board has developed a draft *Election Calendar* to assure compliance with State law (2020) and Montage meeting and election policy and procedures. The *Election Calendar* is being provided to inform our homeowner voters and potential candidates of key upcoming dates. *Dates are approximate and are subject to change.*

September 11

Board sets a date for the **Annual Homeowners Meeting and Election**.

Board appoints *Inspector of Elections*.

October 1

Inspector of Elections distributes **Board Member Self-Nomination Form**.

(Three Board positions to be filled in 2021).

Self-Nomination Form due by January 8

November 1

Board approves the preliminary **Homeowner Voter List** and posts on the Montage website.

January 8

Board approves 2021 election ballot including Board Member candidates.

January 15

Inspector of Elections posts final **Homeowner Voter List** on the Montage website for homeowner review and correction.

Inspections and corrections completed by February 15.

February 15

Inspector of Elections mails Ballots to voters. Homeowners vote and return ballots to PPM by March 12, or deliver in person to the *Inspector of Elections* on March 20, prior to the close of Elections.

March 20

Annual Homeowners Meeting. Homeowner's last opportunity to return ballot.

Inspector of Elections opens, counts, certifies votes and announces election results.

MONTAGE CONTACT INFORMATION

Association Board Members

Curtis Beyer—President

CurtB@montageatmissionhills.org

Tony Michaelis—Vice President

tonymichaelis@icloud.com or

213.200.4274

Norm Giere—Secretary

giereARC@gmail.com

Tom Tousignant—Treasurer

td2znot@aol.com or 760.321.9271

Gary Roman—Director-at-Large

grroman@aol.com or

310.600.4279

Architectural Review Committee

Norm Giere—Chair

giereARC@gmail.com

Tony Michaelis—Board Liaison

tonymichaelis@icloud.com

Emergency Preparedness Committee

Chuck Middleton—Chair

cmiddleton@roosevelt.edu

Website Committee

Scott Reese—Webmaster

scott.o.reese@gmail.com

Welcome Committee

Frank San Juan—Chair

frankcsanjuan@gmail.com

Gary Roman—Board Liaison

grroman@aol.com or

310.600.4279

Cathedral City Contacts

Cathedral City Emergency—911

Cathedral City Police—760.770.0300

Police Emergency Only—760.202.2411

Fire—760.770.8200

Cathedral City Vacation Rental Hotline

(Short Term)—760.553-1031

Montage Website

MontageatMissionHills.org

Community Management Office

Personalized Property Management (PPM)

68950 Adelina Rd, Cathedral City, CA 92234

Tel: 760.325.9500

Fax: 760.325.9300

Community Management Contacts

Shelly Ruegsegger—Senior Community Mgr

sruegsegger@ppmineternet.com

Caren Oliva—Assistant Community Mgr

caren@ppmineternet.com

Heidi Grasl—Phone gate-access inquiries:

hgrasl@ppmineternet.com

Mark See—Maintenance Supervisor:

msee@ppmineternet.com

To Program Your Vehicle for Gate Entry

Thomas Harp: Rthomasharp3@gmail.com

or 916.296.1563

Gary Roman: grroman@aol.com or

310.600.4279

Gary is responsible for distribution of Transmitters for gate access. The current cost is \$35.00 each. If you need an extra transmitter email Gary and get your vehicle programmed at the same time.

Burrtec Waste and Recycling

Contact for any refuse issues including

bin replacement: 760.340.2113 or

burrtec.com/cathedral-city

Cathedral City Guide and Calendar

To have a *Refuse and Recycling Guide* and *Cathedral City Calendar* mailed to your home contact Deanna Pressgrove with the City of Cathedral City at 760.770.0369 or dpressgrove@cathedralcity.gov

Discover Cathedral City

Go to: discovercathedralcity.com

There you will find a *City Calendar* of local events, entertainment, senior services, dining options, and local news.