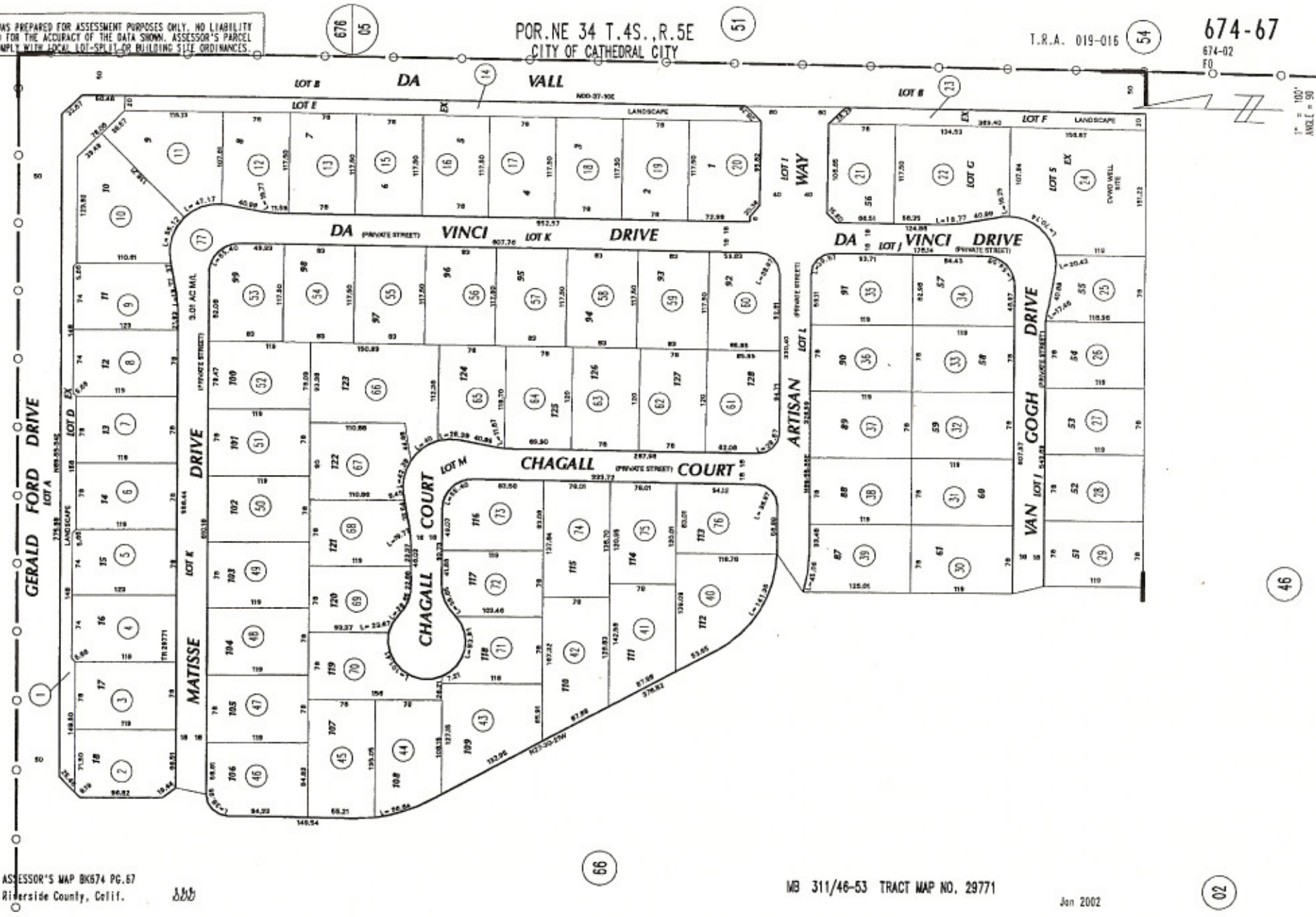


THIS MAP WAS PREPARED FOR ASSESSMENT PURPOSES ONLY. NO LIABILITY IS ASSUMED FOR THE ACCURACY OF THE DATA SHOWN. ASSESSOR'S PARCEL MAY NOT COMPLY WITH LOCAL LOT-SPLIT OR BUILDING SIZE ORDINANCES.

POR. NE 34 T. 4S., R. 5E
CITY OF CATHEDRAL CITY

T.R.A. 019-016

674-67
674-02
FO



ASSESSOR'S MAP BK674 PG. 67
Riverside County, Calif.

WB 311/46-53 TRACT MAP NO. 29771

Jan 2002

01/2
80

676
05

51

54

66

46

02

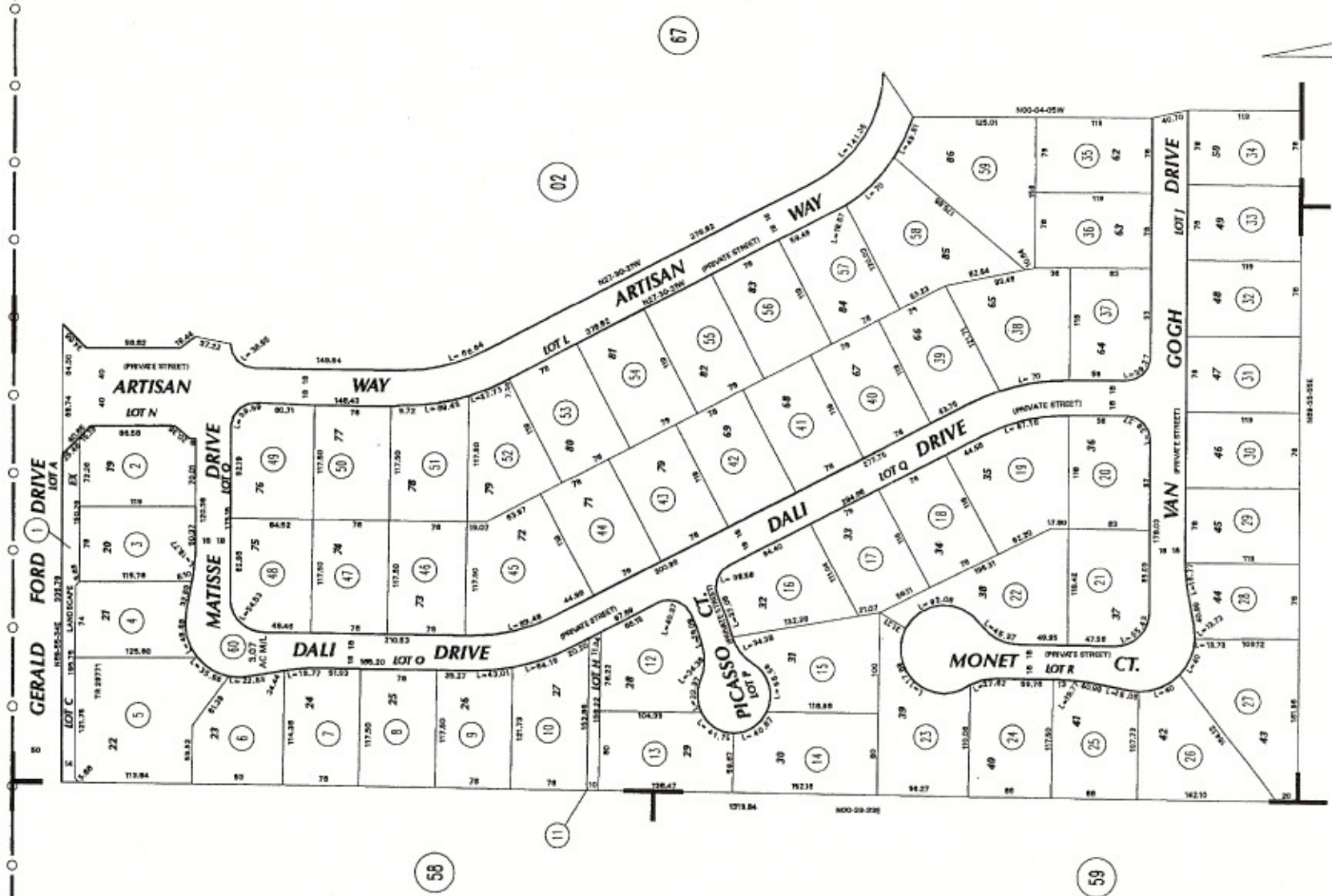
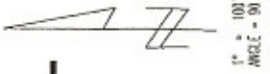
1" = 100'
ANGLE = 90

THIS MAP WAS PREPARED FOR ASSESSMENT PURPOSES ONLY. NO LIABILITY IS ASSUMED FOR THE ACCURACY OF THE DATA SHOWN. ASSESSOR'S PARCEL MAY NOT COMPLY WITH LOCAL LOT-SPLIT OR BUILDING SITE ORDINANCES.

POR. NE 34 T. 4S., R. 5E
CITY OF CATHEDRAL CITY

T.R.A. 019-016

674-66
674-02



ASSESSOR'S MAP BK674 PG. 66
Riverside County, Calif.

MB 311/46-53 TRACT MAP NO. 29771

Jan 2002

0/3
60

673
31

58

67

02

46

59