

 **Montage**  
*At Mission Hills*

# Montage Messenger

Community Newsletter July 2010

## Whew! No Toxic Chinese Drywall Used in Montage

### Montage Built Before Noxious, Dangerous, Metal-Eating Sheetrock Hits U.S.

Montage homeowners can breathe a collective sigh of relief regarding a key component inside their homes: NO CHINESE DRYWALL was used in the construction of our homes.

The problem with the Chinese-made drywall is the emission of hydrogen sulfide gasses, which causes corrosion in appliances, air conditioning coils, wiring and other metals. Thousands of homes across the country have been built with the Chinese drywall and the legalities have risen to the level of an international product safety and damages dispute. But the financial implications are in the billions for unlucky homeowners.

Mark Defever, the lead construc-

tion manager during the building of our community confirmed that our drywall subcontractor used exclusively American-made drywall in Montage.

"There was a shortage of drywall board back in '02 and '03 because American companies were shipping huge tonnages of wallboard over to China. Even drywall from Canada and Mexico sources had dried up. I had a heck of a time getting the stuff for Montage and it caused a couple of delays here," he recalls.

Imagine having to rip out all of your walls, repair the wiring damage, replace appliances then install, tape and paint every wall and ceiling in your house... and the insurance company is telling

you they don't cover it.

It also gives off a pungent, rotten-egg-like smell which gives people sinus allergies and makes the throat hoarse.

Many homeowners with the toxic product have had to move out of their homes for health reasons. Their homes are completely un-sellable, as well.

The U.S. Consumer Product Safety Commission has petitioned China to pay for affected homes, to no avail thus far. The cost will be astronomical.

Thank goodness we aren't all part of a huge, endless class action suit against some Chinese drywall company, trying to have our homes essentially re-built inside...and your insurance co. tells you you're on your own. Frightening.

## Any Graphic Designers Ready to Volunteer For Our Newsletter?

The Messenger needs volunteer writers and a graphic designer to assist in publishing the bi-monthly newsletter in its current format. You'll be helping with the writing of articles, doing the layout, photo gathering, editing, help with the ads our advertisers create and general design. If you would like to develop articles on your neighbors or announcements of their life events such as birthdays, anniversaries, parties, social events, etc., or even community news (or Gossip), recipes or whatever - any and all would be welcome.

Experience with Adobe InDesign, Quark Xpress, Publisher and Photoshop is very helpful, too.

Without volunteers, the Newsletter will be reverting back to the previous design. If you're interested in helping, please email Tom Tousignant at TD2Znot@aol.com



## Edison Angling for Another Home Electricity Rate Hike

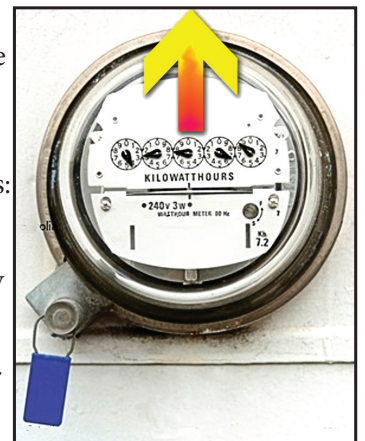
Southern California Edison has a detailed notice of their forthcoming application to raise your electric rates. Again. Look at the last electric statement you received for details.

This is rather disheartening news in the face of a calamitous economy and Summer rates that jack electric bills into the mid- to high-hundreds of dollars for many desert homeowners.

The biggest juice guzzlers are pretty obvious: air conditioning, pool equipment, computers, some fans, refrigerators. Many appliances, like televisions continue to draw juice even when they are turned off. These electric vampires need to be unplugged to stop drawing amp hours.

For more info on ways to cut down on your use of power, check out this website.

[www.SCE.com/tips/residential/](http://www.SCE.com/tips/residential/)



**Bookmark Our New Website Address: [www.MontageMH.Wordpress.com](http://www.MontageMH.Wordpress.com)**

# From the Top

Tom  
Tousignant

## President's Memo

Welcome to summer in the desert. The Board had a spirited meeting in May. The focus was proposals from the Architecture & Landscape Committee for upgrades to the entrance and perimeter landscaping. The changing of the entrance landscaping to desertcape with colorful desert plants instead of flowers was approved. The cost of the conversion will be paid for within a year from savings in the semi annual cost of flowers and provide continued savings to help fund other landscape improvement projects.

Following an extended discussion the Board approved hiring a Landscape Architect

to develop a long term plan for the perimeter landscaping. Several architects have been contacted to date and are in the process of submitting proposals for consideration. The process toward the selection of an architect will be continued at the July 8th Board meeting.

The surface in the Gerald Ford entrance is going to be cleaned up by the vendor that did the refurbishment at no cost (one time only). They will be fixing chipping paint and trying to remove the skid marks. Skid marks are a significant problem. If you observe any vehicle leaving skid marks, please report it to Jennifer at PPM.

The A & L Committee is increasing the efforts to control fire ants in the perimeter landscaping. They are working with our pest control service to improve the results of their control efforts and calling in extra services from Vector Control.

To date Consent Forms for electronic distribution of information have been received from 82 homeowners within Montage. I intend to be contacting the remaining 46 to encourage their participation.



Connect  
on a  
Different  
Level.

advertising • design

website development

strategic marketing materials

event promotion



HMS Creative, Inc

760 770 6677

MJ@hmsCreative.com



Thank You to All of Our Advertisers For Your Support



# MAXIMUM SECURITY

People You Know - A Company You Trust

- \* Free connection of your existing Montage alarm system
- \* Free system check-up and replacement of emergency battery
- \* Free three months of monitoring service (new clients only with one-year agreement)

**(760) 770-0777**

[www.maximumsecurity.info](http://www.maximumsecurity.info)

Alarm Company License 5705

## Why Hassle With Dropping Things Off at the Cleaners?



## FREE Pick Up & Delivery



- Completely FREE HOME DELIVERY  
...Prices Same as store customers
- NO minimum order or frequency
- NO need to be home for pick up or delivery
- Certified Dry Cleaning Professionals



**50% Off**

Save 50% on Your First Order!

**Call 1-888-891-1092**  
to Start Your Service.

Discount valid on first order only. Excludes laundered shirts, leather or specialty items. Not valid with other discounts. Offer expires on 7/31/10.





# Your Electronic Distribution Approval Form Is Due Back Now

Tom needs your forms back ASAP. The cost of mailing, postage and handling has shot up to \$2.70 per month for every one of the 128 households in Montage. That's over \$32 a year per homeowner for delivery of Association notices and documents. That's a stiff price to pay for information transfer.



A recent mailing requested your approval to begin sending you documents electronically to your email account. We will not spam you or use the address for anything but official community business, as well as the newsletter and other important information. If you haven't returned the electronic mailing permission form, please do so.

These forms will save your Homeowner's Association thousands of dollars a year. If you need a new approval form or have any questions, contact Tom Tousignant at TD2znot@aol.com



## Side Gate Lock Down!

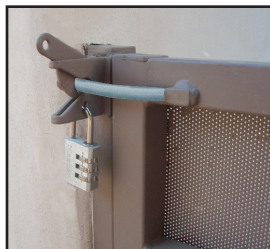
There has been a lot of discussion about what types of locks we should use on our side gates. So here are a few suggestions:

- 1) You can add a COMBINATION LOCK. They have small locks made by Masters which

are available at WalMart for under \$5. (Make sure to give your combination number to your alarm company and your Emergency/key contact person).

2) Steve Kaufer of Maximum Security suggested purchasing a KEY BOX COMBINATION LOCK at Home Depot or Lowe's for around \$25. Similar in concept to the realtor's lock box where the key is available behind the lock with a combination. (Make sure to give the combination number to your alarm company and your Emergency/key contact person).

3) For those with medical issues, The Chief at the Cathedral City Fire Department suggested purchasing an EMS LOCK-BOX. To find out more about the EMS lockbox call the Fire Department directly. Just some extra safety tips.



## Architecture & Landscape Committee Reminder About Your House Numbers

After seven years in the desert sun, many black house numbers are fading or have a lot of dust on them. Can you check your address numbers and wipe them down or touch them up with some black paint if they need it? If you'd rather replace them, the original style numbers can be purchased at the True Value hardware store in the Palm Springs Mall at Farrell and Baristo and possibly Home Depot or Lowe's.



Residents who are still receiving violations letters for failure to turn on their light sensor switch at night, (to control the lights above or at the sides of the garage door) should contact PPM or me to get a switch lock. That way they won't have to worry about the lights coming on except when the bulbs burn out. It's really very convenient to control your lights this way. This is a security matter since we do not have street lights in Montage.



## Street Sweeping Thursdays!

Our streets are swept by the heavy equipment trucks every Thursday. Please make sure all cars, including service worker cars are off the street on Thursdays. Also be sure trees are trimmed so they do not interfere with the street sweeper.

## Trash Can Put Away Reminder



For trash collection on Tuesdays, please do not pull out your refuse containers any earlier than Monday afternoon. After the trash has been picked up, please have your cans put away no later than Wednesday at 10 am. Thank you very much for keeping Montage a clean, beautiful community.

## POLICELLI LIGHTING & DESIGN

*Finest Quality – Near Wholesale Pricing*

[www.fabulouslighting.com](http://www.fabulouslighting.com)

415.621.7745

## Contact Corner

Keep This Information Handy When You Would Like to Comment or Report an Issue

Jennifer Zeivel, PPM	760-325-9500
Email PPM	info@ppmlinternet.com
Tom Tousignant, Pres.	td2znot@aol.com
Sandy Nips, A&L	sandynips@hotmail.com
Pam Price, Security	760-202-8728
Cathedral City Police	760-770-0300
Police Emergency Only	760-202-2411
Cathedral City Fire	760-770-8200
City Hall	760-770-0340
Graffiti Hotline	760-770-8286
Fire Emergency	Dial 911

Newsletter Comments or Suggestions...

TD2znot@aol.com

Website: [www.MontageMH.Wordpress.com](http://www.MontageMH.Wordpress.com)